

35 Series Service Case - Low Profile 44" H Double Duty - Deli



Model No.	Description	Length	Depth	Height	Voltage	Amps	HP/BTUs	Power Cord	Est. Ship Weight
SC-CDS35-4L	Self-contained	50"	37.5"	44"	115	12.0	1/4	YES	480
SC-CDS35-6L	Self-contained	71"	37.5"	44"	115	12.0	1/3	YES	625
SC-CDS35-8L	Self-contained	95"	37.5"	44"	115	16.0	1/3	YES	880

MODEL NUMBER PREFIX - SC = Self-contained R = Remote
 MODEL NUMBER SUFFIX - W = White B = Black S = Stainless Steel LED = LED - lighting
 • Cases are designed to operate at 75 degrees Fahrenheit and 55% relative humidity
 • Cases are equipped with drains; check your local building codes for connection requirements.
 • Specification subject to change without notice
 IF COLORS ARE MIXED AN ADDITIONAL CHARGE WILL APPLY



35 Series Service Case - Low Profile 44" H Double Duty - Deli

Standard Specifications and Optional Features

CONSTRUCTION

- UL - Classified to ANSI/NSF 7
- Foamed in place CFC free foam
- Thermal insulated front glass - 26" H
- Heavy gauge steel super structure
- Bottom storage
- Drain is included for cleaning

INTERIOR

- White, black or stainless steel ends
- Stainless steel heavy gauge mezzanine shelf
- Air insulated baffle (prevents moisture from dripping into display area)
- Epoxy coated main deck shelves

EXTERIOR

- Double pane rear removable doors
- Newly designed rear compression door jamb
- Removable front grille allows for cleaning
- Removable rear grille for easy servicing
- 1" bumper

FINISHES

- White, black or stainless steel front and ends
- Stainless steel mirror trim
- Stainless steel heavy gauge top - 17.375" W
- Bottom rear is designer white, black or stainless steel aluminum

LIGHTING

- 2 rows of lighting at top of unit

ELECTRICAL REQUIREMENTS

- 115V 4', 6', & 8' with power cord
- UL/CUL listed
- 115V-5AMP general purpose receptacle

REFRIGERATION

- Copevap system (eliminates need for condensate pan)
- R134a expansion valve system
- Gravity coil located at inside top of unit
- Self-contained unit
- Automatic defrost electronically controlled (Self-contained units only)
- Electronically control maintains constant temperatures
- Remotes available

OPTIONS

- Scale stand
- Paper cutter
- Stainless steel, laminate, or paint
- Mirrored doors
- Extra row of mezzanine shelf
- Drop work shelf
- 2" Front bumper
- Door locks
- Digital thermometer
- Pass thru front doors
- Sandwich racks

Important Note:

All refrigerated cases are designed to operate in an environment of 75 degrees and 55% relative humidity. Product must be cooled before being displayed within the case.

DRAIN IS REQUIRED

35 Series Service Case - Low Profile 44" H Double Duty - Deli

Technical Data

Model No.		SC-CDS35-4L	SC-CDS35-6L	SC-CDS35-8L
Length		50"	71"	95"
Height		44"	44"	44"
Depth		35.5"	35.5"	35.5"
Depth with bottom door		37.5"	37.5"	37.5"
(Dimensions are +/- 1/4")				
Operating temperature		36°F to 40°F	36°F to 40°F	36°F to 40°F
Refrigerant (expansion valve)		R134a	R134a	R134a
Compressor size HP		1/4	1/3	1/3
Defrost per day (24 hours)	Air Defrost	2 per day	2 per day	2 per day
Voltage		115	115	115
Amperage		12.0	12.0	16.0
Cord and plug		YES	YES	YES
Exterior color		W, B, S	W, B, S	W, B, S
Interior color		W, B, S	W, B, S	W, B, S
Floors		W, B, S	W, B, S	W, B, S
# of top doors		2	2	2
Door size		19.56" x 19.25"	29.81" x 19.25"	19.56" x 19.25"
# of bottom doors		1	2	3
Front glass		26" x 45"	26" x 66"	26" x 90"
# of coils		2	2	2
Bottom storage		YES	YES	YES
# of main deck shelves		2	3	4
Main deck size		22.25" x 31.625"	22.25" x 31.625"	22.25" x 31.625"
Cubic capacity		23	34	45
Mezzanine shelf		Standard	Standard	Standard
Shipping Info				
Height		58"	58"	58"
Depth		44"	44"	44"
Length		61"	87"	109"
Gross weight		480	625	880
Cubic feet		89	128	164

(ALL WHITE OR ALL BLACK, NO EXTRA CHARGE—IF COLORS ARE MIXED AN ADDITIONAL CHARGE WILL APPLY)

Prefix

SC = Self-contained
R = Remote

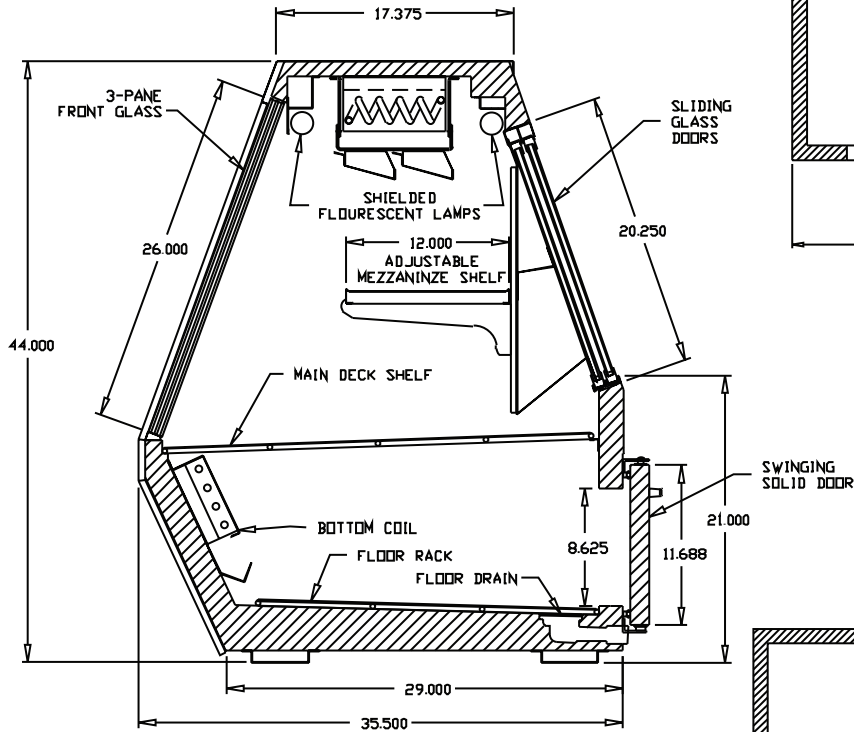
Suffix

B = Black
W = White
S = Stainless Steel
LS = T8 lighting
LED = LED lighting

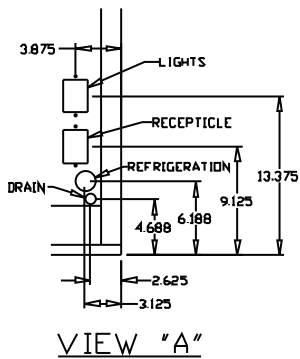
- Cases are designed to operate at 75 degrees Fahrenheit and 55% relative humidity
- Cases are equipped with drains; check your local building codes for connection requirements.
- Specification subject to change without notice

35 Series Service Case - Low Profile 44" H Double Duty - Deli

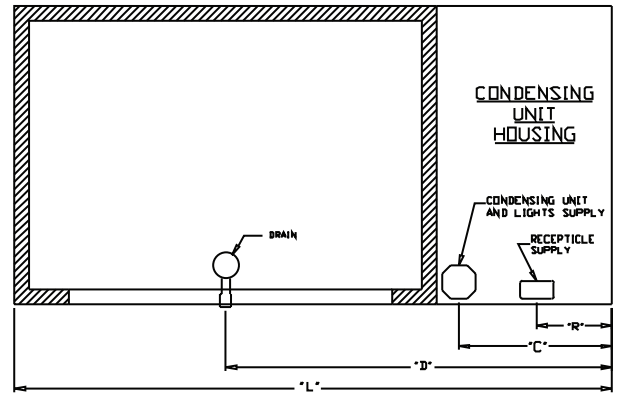
Technical Data • Side View • Plan View



Cross Section

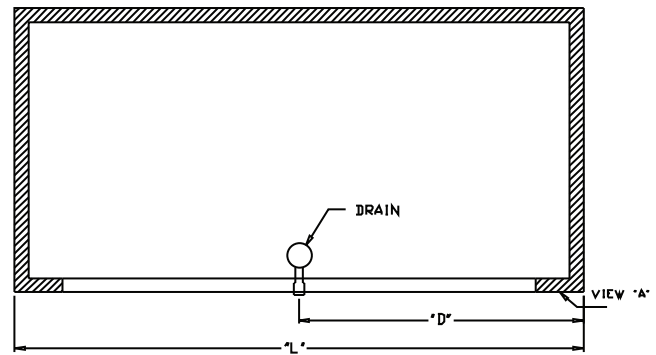


VIEW "A"



SIZE	"L"	"R"	"C"	"D"
4	50	25	25	33
6	71	9	18.250	45.875
8	95	9	18.250	57.875
10	119	9	18.250	69.875
12	143	9	18.250	81.875

Plan View Self-contained



SIZE	"L"	"D"
4	50	25
6	71	35.500
8	95	47.500
10	119	59.500
12	143	61.500

Plan View Remote