

## 35 Series – Double Duty Deli

• PRODUCT SPECIFICATIONS SHEETS



- Cases are designed to operate at 75 degrees Fahrenheit and 55% relative humidity

Self-Contained Remote	SC-CDS35-4 R-CDS35-4	SC-CDS35-6 R-CDS35-6	SC-CDS35-8 R-CDS35-8	SC-CDS35-10 R-CDS35-10	SC-CDS35-12 R-CDS35-12
<b>Length</b>	50"	71"	95"	119"	143"
<b>Height</b>	52"	52"	52"	52"	52"
<b>Depth</b>	35-1/2"	35-1/2"	35-1/2"	35-1/2"	35-1/2"
<b>Depth w/bottom door</b>	38-1/2"	N/A	N/A	N/A	N/A

(Dimensions are +/-1/4")

- Specification subject to change without notice

### Standard Specifications and Optional Features

<p><b>CONSTRUCTION</b>          UL Classified to ANSI/NSF 7          Foamed in place CFC free foam          Triple pane insulated front glass-26"H          Heavy gauge steel super structure          Bottom storage          Drain is included for cleaning</p>	<p><b>FINISHES</b>          Satin finish extrusion on doors and door tracks          Designer white exterior front and ends          Stainless steel mirror trim          Stainless steel heavy gauge top - 17" W          Designer white exterior rear          1" Boston Bumper Gray</p>
<p><b>INTERIOR</b>          Designer white interior ends          White aluminum floor (<i>bottom storage area</i>)          Air insulated baffle (<i>prevents moisture from dripping into display area</i>)          Stainless steel heavy gauge mezzanine shelf</p>	<p><b>REFRIGERATION</b>          Copevap system (<i>eliminates need for condensate pan</i>)          R134a expansion valve system          Gravity coil located at <i>inside top of unit and bottom storage area</i>          Self contained system          Automatic defrost controlled by time clock-(<i>self contained units only</i>)          Pressure control maintains constant temperatures          Remotes available</p>
<p><b>EXTERIOR</b>          Double pane rear removable doors          Newly designed rear compression door jamb          Removable front grille allows for cleaning          Removable rear grille for easy servicing</p>	<p><b>LIGHTING</b>          2 Rows of T12 lighting at top of unit</p>
<p><b>ELECTRICAL REQUIREMENTS</b>          115V/60Hz/1Ph          Unit must be hard wired          UL/CUL listed          115V-12AMP general purpose receptacle (<i>wired separately</i>)</p>	<p><b>Important Note:</b> <i>All refrigerated cases are designed to operate in an environment of 75 degrees and 55% relative humidity.</i></p> <p><b>Important Note:</b> <i>Product must be cooled before being displayed within the case.</i></p>

### OPTIONAL FEATURES

<p>Scale stand          Paper cutter          Paint, laminate or stainless steel          Mirrored doors          Extra stainless steel mezzanine shelf          Drop work shelf</p>	<p>Front bumpers 1" or 3"          Door locks          Digital thermometer          Pass thru front doors 4, 6 and 8 foot only</p>
--	--



### Technical Data

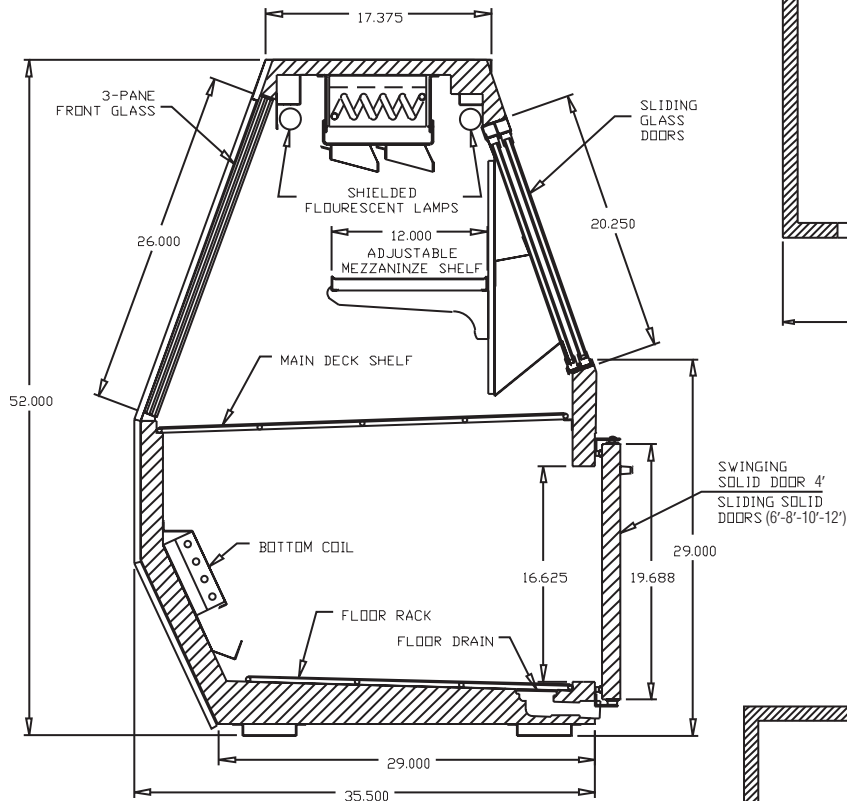
Model	Self contained	SC-CDS35-4	SC-CDS35-6	SC-CDS35-8	SC-CDS35-10	SC-CDS35-12
	Remote	R-CDS35-4	R-CDS35-6	R-CDS35-8	R-CDS35-10	R-CDS35-12
Length		50"	71"	95"	119"	143"
Height		52"	52"	52"	52"	52"
Depth		35-1/2"	35-1/2"	35-1/2"	35-1/2"	35-1/2"
Depth with bottom door (Dimensions are +/- 1/4")		38-1/2"	N/A	N/A	N/A	N/A
Operating temperature	Self contained	36°F to 40°F	36°F to 40°F	36°F to 40°F	36°F to 40°F	36°F to 40°F
Refrigerant (expansion valve)	Self contained	R134a	R134a	R134a	R134a	R134a
Compressor size HP		1/4	1/3	1/2	1/2	3/4
Pressure control settings @ 75°F, 55%RH	CUT IN	30	30	30	30	30
	CUT OUT	12	12	12	12	12
Defrost per day (24 hours)	Air Defrost	1 per day	1 per day	1 per day	1 per day	1 per day
BTU's at +20°F Evap. Temp.	Remote	1400	2100	2800	3500	4200
Voltage		115V	115V	115V	115v	115V
Amperage	Self contained	6.0A	8.7A	11.2A	13.8A	17.4A
Amperage, lights only	Remote	0.8A	1.3A	1.6A	2.4A	2.4A
Cord and plug		No	No	No	No	No
Exterior color		White	White	White	White	White
Interior color		White	White	White	White	White
Floors		White	White	White	White	White
# of top doors		2	2	4	4	4
Door size		19-3/16"X19-3/16"	29-5/8"X19-3/16"	19-3/16"X19-3/16"	23-1/2"X19-3/16"	29-5/8"X19-3/16"
# of bottom doors	Self contained	1 external	2	2	3	4
	Remote	2	2	4	4	4
# of coils		2	2	2	2	2
Bottom storage		Yes	Yes	Yes	Yes	Yes
Front glass		26" X 45"	26" X 66"	26" X 90"	26" X 114"	26" X 138"
# of main deck shelves		2	3	4	5	6
Main deck size		31-5/8"X22-1/4"	31-5/8"X22-1/4"	31-5/8"X22-1/4"	31-5/8"X22-1/4"	31-5/8"X22-1/4"
Cubic capacity (ft <sup>3</sup> )		30	45	60	75	90
Mezzanine- Shelf		Standard	Standard	Standard	Standard	Standard

### SHIPPING INFORMATION

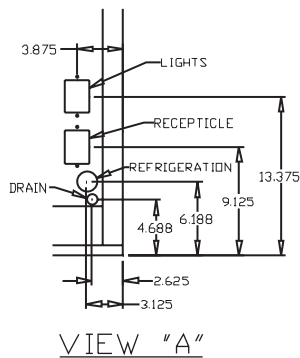
Height		58"	58"	58"	58"	58"
Depth		44"	44"	44"	44"	44"
Length		61"	87"	109"	135"	157"
Gross weight	Self contained	500#	645#	900#	1230#	1344#
	Remote	460#	595#	845#	1175#	1295#
Cubic feet		90ft <sup>3</sup>	128ft <sup>3</sup>	160ft <sup>3</sup>	200ft <sup>3</sup>	231ft <sup>3</sup>

- Cases are designed to operate at 75 degrees Fahrenheit and 55% relative humidity
- Cases are equipped with drains; check your local building codes for connection requirements.
- Specification subject to change without notice

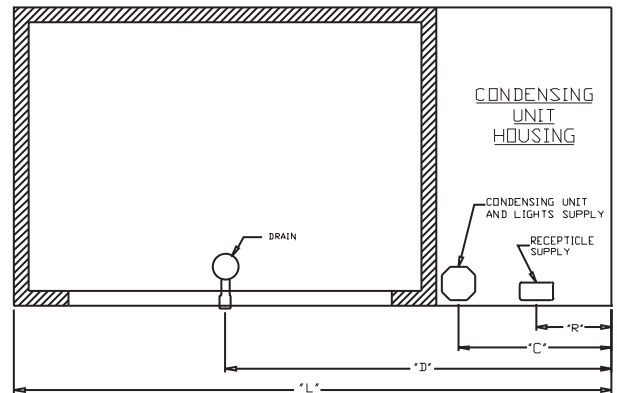
### Technical Data • Side View • Plan View



Cross Section

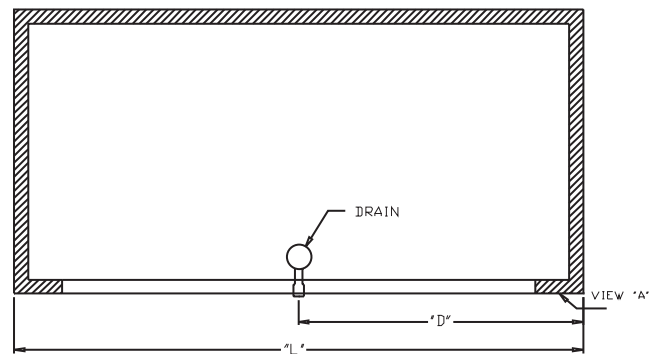


VIEW "A"



SIZE	"L"	"R"	"C"	"D"
4	50	25	25	33
6	71	9	18.250	45.875
8	95	9	18.250	57.875
10	119	9	18.250	69.875
12	143	9	18.250	81.875

Plan View Self-contained



SIZE	"L"	"D"
4	50	25
6	71	35.500
8	95	47.500
10	119	59.500
12	143	61.500

Plan View Remote