

35 Series Service Case Double Duty - Deli



Pass-Thru Model

Model No.	Description	Length	Depth	Height	Voltage	Amps	HP/BTUs	Power Cord	Est. Ship Weight
SC-CDS35-4	Self-contained	50"	37.5"	52"	115	12.0	1/4	YES	500
SC-CDS35-6	Self-contained	71"	35.5"	52"	115	12.0	1/3	YES	645
SC-CDS35-8	Self-contained	95"	35.5"	52"	115	16.0	1/2	YES	900
SC-CDS35-10	Self-contained	119"	35.5"	52"	115	13.8	1/2	NO	1230
SC-CDS35-12	Self-contained	143"	35.5"	52"	115	17.4	3/4	NO	1344
SC-CDS35-4-PT	Self-contained	50"	37.5"	52"	115	12.0	1/4	YES	500
SC-CDS35-6-PT	Self-contained	71"	35.5"	52"	115	12.0	1/3	YES	645
SC-CDS35-8-PT	Self-contained	95"	35.5"	52"	115	16.0	1/2	YES	900
R-CDS35-4	Remote	50"	37.5"	52"	115	0.8	1400	NO	460
R-CDS35-6	Remote	71"	35.5"	52"	115	1.3	2100	NO	595
R-CDS35-8	Remote	95"	35.5"	52"	115	1.6	2800	NO	845
R-CDS35-10	Remote	119"	35.5"	52"	115	2.4	3500	NO	1175
R-CDS35-12	Remote	143"	35.5"	52"	115	2.4	4200	NO	1295

MODEL NUMBER PREFIX - SC = Self-contained R = Remote
 MODEL NUMBER SUFFIX - W = White B = Black S = Stainless Steel LED = LED - lighting
 • Cases are designed to operate at 75 degrees Fahrenheit and 55% relative humidity
 • Cases are equipped with drains; check your local building codes for connection requirements.
 • Specification subject to change without notice
 IF COLORS ARE MIXED AN ADDITIONAL CHARGE WILL APPLY



35 Series Service Case Double Duty - Deli

Standard Specifications and Optional Features

CONSTRUCTION

- UL - Classified to ANSI/NSF 7
- Foamed in place CFC free foam
- Thermal insulated front glass - 26" H
- Heavy gauge steel super structure
- Bottom storage
- Drain is included for cleaning

INTERIOR

- White, black or stainless steel ends
- Stainless steel heavy gauge mezzanine shelf
- White aluminum floor (bottom storage area)
- Air insulated baffle (prevents moisture from dripping into display area)

EXTERIOR

- Double pane rear removable doors
- Newly designed rear compression door jamb
- Removable front grille allows for cleaning
- Removable rear grille for easy servicing
- 1" Front Bumper

FINISHES

- White, black or stainless steel front and ends
- Stainless steel mirror trim
- Stainless steel heavy gauge top - 17.375" W
- Bottom rear is designer white, black or stainless steel aluminum

LIGHTING

- 2 rows of lighting at top of unit

ELECTRICAL REQUIREMENTS

- 115V 4', 6', & 8' with power cord
- Unit must be hard wired, 10' & 12' only
- UL/CUL listed
- 115V-5AMP general purpose receptacle (wired separately) 10' & 12' only

REFRIGERATION

- Copevap system (eliminates need for condensate pan)
- Self-contained - R134a expansion valve system
- Remote - R407A expansion valve system
- Gravity coil located at inside top of unit
- Automatic defrost electronically controlled (Self-contained units only)
- Electronically control maintains constant temperatures
- Remotes available

OPTIONS

- LED - lit
- LED - lit shelf
- Scale stand
- Paper cutter
- Stainless steel, laminate, or paint
- Mirrored doors
- Extra stainless steel mezzanine shelf
- Drop work shelf
- 2" Front bumper
- Door lock
- Digital thermometer
- Pass thru front doors 4', 6', 8' only
- Sandwich racks
- Salad pan settings

Important Note:

All refrigerated cases are designed to operate in an environment of 75 degrees and 55% relative humidity. Product must be cooled before being displayed within the case.

DRAIN IS REQUIRED

35 Series Service Case Double Duty - Deli

Technical Data

Model No.	SC R	SC-CDS35-4 R-CDS35-4	SC-CDS35-6 R-CDS35-6	SC-CDS35-8 R-CDS35-8	SC-CDS35-10 R-CDS35-10	SC-CDS35-12 R-CDS35-12
Length		50"	71"	95"	119"	143"
Height		52"	52"	52"	52"	52"
Depth		35.5"	35.5"	35.5"	35.5"	35.5"
Depth with bottom door (Dimensions are +/- 1/4")		37.5"				
Operating temperature		36°F to 40°F	36°F to 40°F	36°F to 40°F	36°F to 40°F	36°F to 40°F
Refrigerant (exp. valve)	SC	R134a	R134a	R134a	R134a	R134a
Refrigerant (exp. valve)	R	R407A	R407A	R407A	R407A	R407A
Compressor size HP	SC	1/4	1/3	1/2	1/2	3/4
Defrost per day (24 hours)	Air Defrost	2 per day	2 per day	2 per day	2 per day	2 per day
BTU's at +20°F Evap. Temp.	R	1400	2100	2800	3500	4200
Voltage	SC	115	115	115	115	115
Amperage	SC	12.0	12.0	16.0	13.8	17.4
Remote Voltage	R	115	115	115	115	115
Amperage, lights only	R	0.8	1.3	1.6	2.4	2.4
Cord and plug	SC R	YES NO	YES NO	YES NO	NO NO	NO NO
Exterior color		W, B, S	W, B, S	W, B, S	W, B, S	W, B, S
Interior color		W, B, S	W, B, S	W, B, S	W, B, S	W, B, S
Inside end panels		W, B, S	W, B, S	W, B, S	W, B, S	W, B, S
Floors		W, B, S	W, B, S	W, B, S	W, B, S	W, B, S
# of top doors		2	2	4	4	4
Door size		19.56" x 19.25"	29.81" x 19.25"	19.56" x 19.25"	23.81" x 19.25"	29.81" x 19.25"
# of bottom doors	SC R	1 external 2	2 2	2 2	2 4	4 4
# of coils		2	2	2	2	2
Bottom storage		Yes	Yes	Yes	Yes	Yes
Front glass		26" x 45"	26" x 66"	26" x 90"	26" x 114"	26" x 138"
# of main deck shelves		2	3	4	5	6
Main deck size		31.625" x 22.25"	31.625" x 22.25"	31.625" x 22.25"	31.625" x 22.25"	31.625" x 22.25"
Cubic capacity		30	45	60	75	90
Mezzanine shelf		Standard	Standard	Standard	Standard	Standard
Shipping Info						
Height		58"	58"	58"	58"	58"
Depth		44"	44"	44"	44"	44"
Length		61"	87"	109"	135"	157"
Gross weight SC/R		500/460	645/595	900/845	1230/1175	1344/1295
Cubic feet		90	128	160	200	231

(ALL WHITE OR ALL BLACK, NO EXTRA CHARGE—IF COLORS ARE MIXED AN ADDITIONAL CHARGE WILL APPLY)

Prefix

SC = Self-contained
R = Remote

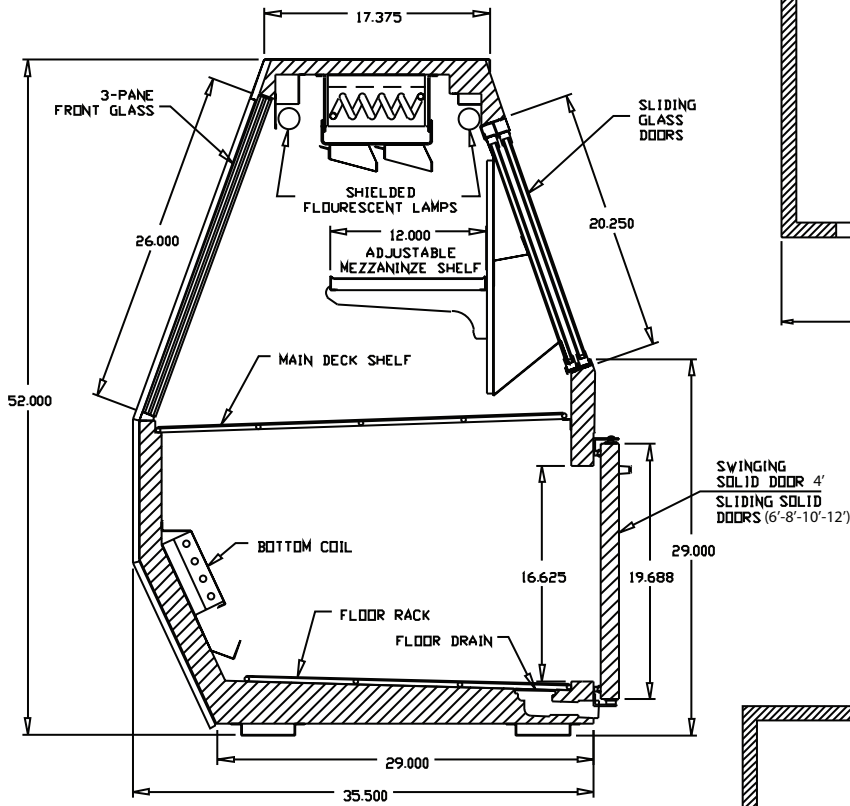
Suffix

B = Black
W = White
S = Stainless Steel
LS = T8 lighting
LED = LED lighting

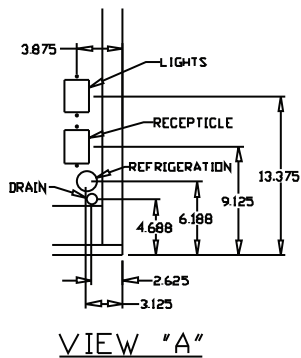
- Cases are designed to operate at 75 degrees Fahrenheit and 55% relative humidity
- Cases are equipped with drains; check your local building codes for connection requirements.
- Specification subject to change without notice

35 Series Service Case Double Duty - Deli

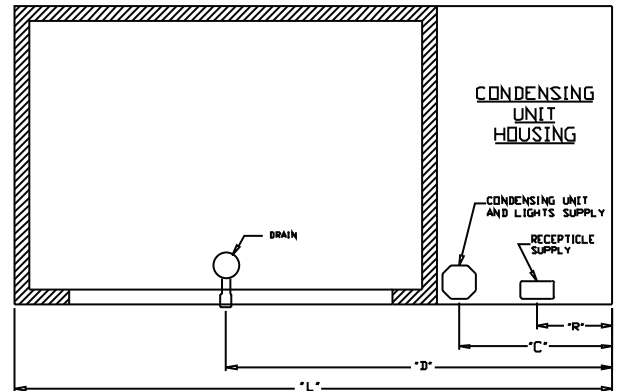
Technical Data • Side View • Plan View



Cross Section

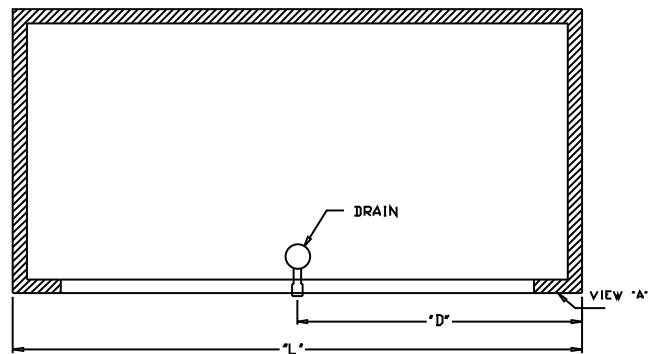


VIEW "A"



SIZE	"L"	"R"	"C"	"D"
4	50	25	25	33
6	71	9	18.250	45.875
8	95	9	18.250	57.875
10	119	9	18.250	69.875
12	143	9	18.250	81.875

Plan View Self-contained



SIZE	"L"	"D"
4	50	25
6	71	35.500
8	95	47.500
10	119	59.500
12	143	61.500

Plan View Remote

35 Series Service Case Double Duty - Red Meat



Model No.	Description	Length	Depth	Height	Voltage	Amps	HP/BTUs	Power Cord	Est. Ship Weight
SC-CMS35-4	Self-contained	50"	37.5"	52"	115	12.0	1/4	YES	500
SC-CMS35-6	Self-contained	71"	35.5"	52"	115	12.0	1/3	YES	645
SC-CMS35-8	Self-contained	95"	35.5"	52"	115	16.0	1/2	YES	900
SC-CMS35-10	Self-contained	119"	35.5"	52"	115	13.8	1/2	NO	1230
SC-CMS35-12	Self-contained	143"	35.5"	52"	115	17.4	3/4	NO	1344
R-CMS35-4	Remote	50"	37.5"	52"	115	0.8	1400	NO	460
R-CMS35-6	Remote	71"	35.5"	52"	115	1.3	2100	NO	595
R-CMS35-8	Remote	95"	35.5"	52"	115	1.6	2800	NO	845
R-CMS35-10	Remote	119"	35.5"	52"	115	2.4	3500	NO	1175
R-CMS35-12	Remote	143"	35.5"	52"	115	2.4	4200	NO	1295

MODEL NUMBER PREFIX - SC = Self-contained R = Remote
 MODEL NUMBER SUFFIX - W = White B = Black S = Stainless Steel LED = LED - lighting
 • Cases are designed to operate at 75 degrees Fahrenheit and 55% relative humidity
 • Cases are equipped with drains; check your local building codes for connection requirements.
 • Specification subject to change without notice
 IF COLORS ARE MIXED AN ADDITIONAL CHARGE WILL APPLY



35 Series Service Case Double Duty - Red Meat

Standard Specifications and Optional Features

CONSTRUCTION

- UL - Classified to ANSI/NSF 7
- Foamed in place CFC free foam
- Thermal insulated front glass - 26" H
- Heavy gauge steel super structure
- Bottom storage
- Drain is included for cleaning

INTERIOR

- White, black or stainless steel ends
- White aluminum floor (bottom storage area)
- Air insulated baffle (prevents moisture from dripping into display area)

EXTERIOR

- Double pane rear removable doors
- Newly designed rear compression door jamb
- Removable front grille allows for cleaning
- Removable rear grille for easy servicing
- 1" Front Bumper

FINISHES

- White, black or stainless steel front and ends
- Stainless steel mirror trim
- Stainless steel heavy gauge top - 17.375" W
- Bottom rear is designer white, black or stainless steel aluminum

LIGHTING

- 2 rows of lighting at top of unit

ELECTRICAL REQUIREMENTS

- 115V 4', 6', & 8' with power cord
- Unit must be hard wired 10' & 12' only
- UL/CUL listed
- 115V-5AMP general purpose receptacle (wired separately) 10' & 12' only

REFRIGERATION

- Copevap system (eliminates need for condensate pan)
- Self-contained - R134a expansion valve system
- Remote - R407A expansion valve system
- Gravity coil located at inside top of unit
- Automatic defrost electronically controlled (Self-contained units only)
- Electronically control maintains constant temperatures
- Remotes available

OPTIONS

- Scale stand
- Paper cutter
- Stainless steel, laminate, or paint
- Mirrored doors
- Stainless steel mezzanine shelf
- Drop work shelf
- 2" Front Bumper
- Door locks
- Digital thermometer
- Pass thru front doors 4', 6', 8' only
- Meat platters
- Red meat bulbs

Important Note:

All refrigerated cases are designed to operate in an environment of 75 degrees and 55% relative humidity. Product must be cooled before being displayed within the case.

DRAIN IS REQUIRED

35 Series Service Case Double Duty - Red Meat

Technical Data

Model No.	SC R	SC-CMS35-4 R-CMS35-4	SC-CMS35-6 R-CMS35-6	SC-CMS35-8 R-CMS35-8	SC-CMS35-10 R-CMS35-10	SC-CMS35-12 R-CMS35-12
Length		50"	71"	95"	119"	143"
Height		52"	52"	52"	52"	52"
Depth		35.5"	35.5"	35.5"	35.5"	35.5"
Depth with bottom door		37.5"				
(Dimensions are +/- 1/4")						
Operating temperature		34°F to 36°F	34°F to 36°F	34°F to 36°F	34°F to 36°F	34°F to 36°F
Refrigerant (exp. valve)	SC	R134a	R134a	R134a	R134a	R134a
Refrigerant (exp. valve)	R	R407A	R407A	R407A	R407A	R407A
Compressor size HP	SC	1/4	1/3	1/2	1/2	3/4
Defrost per day (24 hours)	Air Defrost	2 per day	2 per day	2 per day	2 per day	2 per day
BTU's at +20°F Evap. Temp.	R	1400	2100	2800	3500	4200
Voltage	SC	115	115	115	115	115
Amperage	SC	12.0	12.0	16.0	13.8	17.4
Remote Voltage	R	115	115	115	115	115
Amperage, lights only	R	0.8	1.3	1.6	2.4	2.4
Cord and plug	SC	YES	YES	YES	NO	NO
	R	NO	NO	NO	NO	NO
Exterior color		W, B, S	W, B, S	W, B, S	W, B, S	W, B, S
Interior color		W, B, S	W, B, S	W, B, S	W, B, S	W, B, S
Inside end panels		W, B, S	W, B, S	W, B, S	W, B, S	W, B, S
Floors		W, B, S	W, B, S	W, B, S	W, B, S	W, B, S
# of top doors		2	2	4	4	4
Door size		19.19" x 19.25"	29.625" x 19.25"	19.19" x 19.25"	23.5" x 19.25"	29.625" x 19.25"
# of bottom doors	SC	1 external	2	2	2	4
	R	2	2	2	4	4
# of coils		3	3	3	3	3
Bottom storage		Yes	Yes	Yes	Yes	Yes
Front glass		26" x 45"	26" x 66"	26" x 90"	26" x 114"	26" x 138"
# of main deck shelves		2	3	4	5	6
Main deck size		31.625" x 22.25"	31.625" x 22.25"	31.625" x 22.25"	31.625" x 22.25"	31.625" x 22.25"
Cubic capacity		30	45	60	75	90
Mezzanine shelf		Standard	Standard	Standard	Standard	Standard
Shipping Info						
Height		58"	58"	58"	58"	58"
Depth		44"	44"	44"	44"	44"
Length		61"	87"	109"	135"	157"
Gross weight SC/R		500/460	645/595	900/845	1230/1175	1344/1295
Cubic feet		90	128	160	200	231

(ALL WHITE OR ALL BLACK, NO EXTRA CHARGE—IF COLORS ARE MIXED AN ADDITIONAL CHARGE WILL APPLY)

Prefix

SC = Self-contained
R = Remote

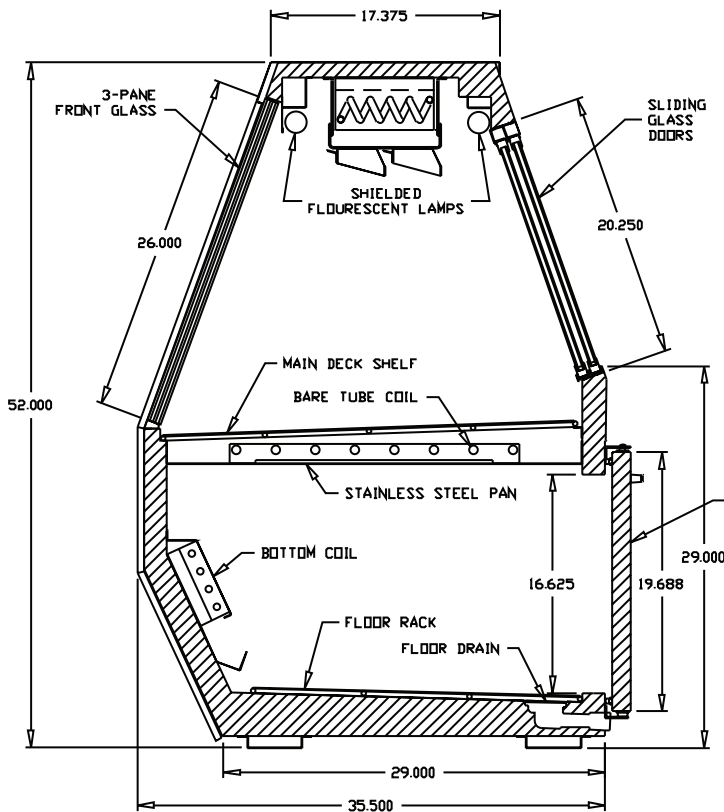
Suffix

B = Black
W = White
S = Stainless Steel
LS = T8 lighting
LED = LED lighting

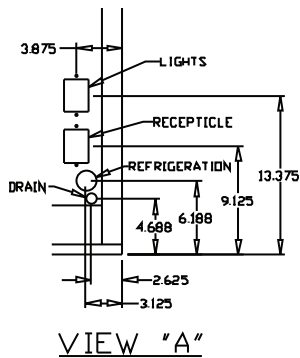
- Cases are designed to operate at 75 degrees Fahrenheit and 55% relative humidity
- Cases are equipped with drains; check your local building codes for connection requirements.
- Specification subject to change without notice

35 Series Service Case Double Duty - Red Meat

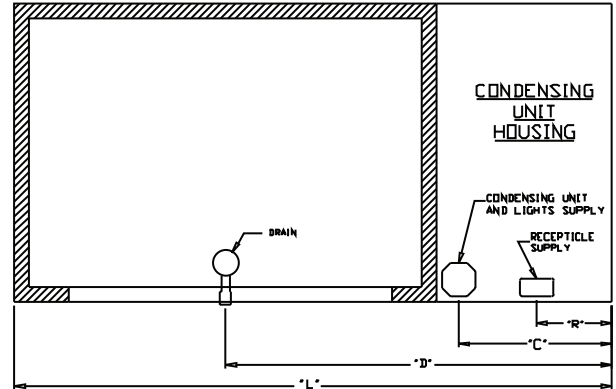
Technical Data • Side View • Plan View



Cross Section

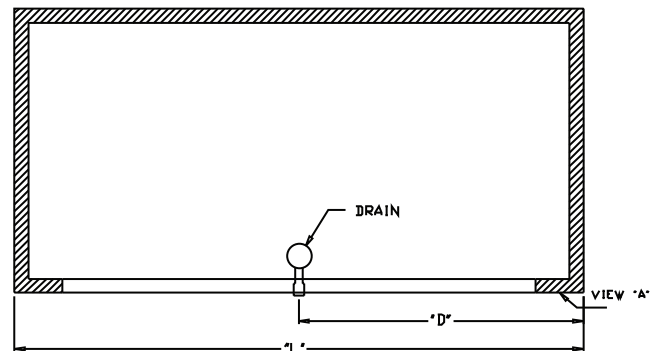


VIEW "A"



SIZE	"L"	"R"	"C"	"D"
4	50	25	25	33
6	71	9	18.250	45.875
8	95	9	18.250	57.875
10	119	9	18.250	69.875
12	143	9	18.250	81.875

Plan View Self-contained



SIZE	"L"	"D"
4	50	25
6	71	35.500
8	95	47.500
10	119	59.500
12	143	61.500

Plan View Remote

35 Series Service Case Double Duty - Fish and Poultry



Remote Model

Model No.	Description	Length	Depth	Height	Voltage	Amps	HP/BTUs	Power Cord	Est. Ship Weight
SC-CFS35-4	Self-contained	50"	37.5"	52"	115	12.0	1/4	YES	500
SC-CFS35-6	Self-contained	71"	35.5"	52"	115	12.0	1/4	YES	645
SC-CFS35-8	Self-contained	95"	35.5"	52"	115	16.0	1/3	YES	900
SC-CFS35-10	Self-contained	119"	35.5"	52"	115	9.9	1/3	NO	1230
SC-CFS35-12	Self-contained	143"	35.5"	52"	115	13.8	1/2	NO	1344
R-CFS35-4	Remote	50"	37.5"	52"	115	0.8	820	NO	460
R-CFS35-6	Remote	71"	35.5"	52"	115	1.3	1230	NO	595
R-CFS35-8	Remote	95"	35.5"	52"	115	1.6	1640	NO	845
R-CFS35-10	Remote	119"	35.5"	52"	115	2.4	2050	NO	1175
R-CFS35-12	Remote	143"	35.5"	52"	115	2.4	2460	NO	1295

MODEL NUMBER PREFIX - SC = Self-contained R = Remote
 MODEL NUMBER SUFFIX - W = White B = Black S = Stainless Steel LED = LED - lighting
 • Cases are designed to operate at 75 degrees Fahrenheit and 55% relative humidity
 • Cases are equipped with drains; check your local building codes for connection requirements.
 • Specification subject to change without notice
 IF COLORS ARE MIXED AN ADDITIONAL CHARGE WILL APPLY



35 Series Service Case Double Duty - Fish and Poultry

Standard Specifications and Optional Features

CONSTRUCTION

- UL - Classified to ANSI/NSF 7
- Foamed in place CFC free foam
- Thermal insulated front glass - 26" H
- Heavy gauge steel super structure
- Bottom storage
- Drain is included for cleaning

INTERIOR

- White, black or stainless steel ends
- White aluminum floor (bottom storage area)
- Air insulated baffle (prevents moisture from dripping into display area)
- Stainless steel individual ice pan

EXTERIOR

- Double pane rear removable doors
- Newly designed rear compression door jamb
- Removable front grille allows for cleaning
- Removable rear grille for easy servicing
- 1" Front bumper

FINISHES

- White, black or stainless steel front and ends
- Stainless steel mirror trim
- Stainless steel heavy gauge top - 17.325" W
- Bottom rear is designer white, black or stainless steel aluminum

LIGHTING

- 2 rows of lighting at top of unit

ELECTRICAL REQUIREMENTS

- 115V 4', 6', & 8' with power cord
- Unit must be hard wired, 10' & 12' only
- UL/CUL listed
- 115V-5AMP general purpose receptacle (wired separately) 10' & 12' only

REFRIGERATION

- Copevap system (eliminates need for condensate pan)
- Self-contained - R134a expansion valve system
- Remote - R407A expansion valve system
- Gravity coil located at inside top of unit
- Automatic defrost electronically controlled (Self-contained units only)
- Electronically control maintains constant temperatures
- Remotes available

OPTIONS

- Scale stand
- Paper cutter
- Stainless steel, laminate, or paint
- Mirrored doors
- Stainless steel mezzanine shelf
- Drop work shelf
- 2" Front bumper
- Door lock
- Digital thermometer
- Pass thru front doors 4', 6', 8' only

Important Note:

All refrigerated cases are designed to operate in an environment of 75 degrees and 55% relative humidity. Product must be cooled before being displayed within the case.

DRAIN IS REQUIRED

35 Series Service Case Double Duty - Fish and Poultry Technical Data

Model No.	SC R	SC-CFS35-4 R-CFS35-4	SC-CFS35-6 R-CFS35-6	SC-CFS35-8 R-CFS35-8	SC-CFS35-10 R-CFS35-10	SC-CFS35-12 R-CFS35-12
Length		50"	71"	95"	119"	143"
Height		52"	52"	52"	52"	52"
Depth		35.5"	35.5"	35.5"	35.5"	35.5"
Depth with bottom door		37.5"				
(Dimensions are +/- 1/4")						
Operating temperature		38°F to 40°F	38°F to 40°F	38°F to 40°F	38°F to 40°F	38°F to 40°F
Refrigerant (exp. valve)	SC	R134a	R134a	R134a	R134a	R134a
Refrigerant (exp. valve)	R	R407A	R407A	R407A	R407A	R407A
Compressor size HP	SC	1/4	1/4	1/3	1/3	1/2
Defrost per day (24 hours)	Air Defrost	2 per day	2 per day	2 per day	2 per day	2 per day
BTU's at +20°F Evap. Temp.	R	820	1230	1640	2050	2460
Voltage	SC	115	115	115	115	115
Amperage	SC	6	6.4	9.1	9.9	13.8
Remote Voltage	R	115	115	115	115	115
Amperage, lights only	R	.8	1.3	1.6	2.4	2.4
Cord and plug	SC	YES	YES	YES	NO	NO
	R	NO	NO	NO	NO	NO
Exterior color		W, B, S	W, B, S	W, B, S	W, B, S	W, B, S
Interior color		W, B, S	W, B, S	W, B, S	W, B, S	W, B, S
Inside end panels		W, B, S	W, B, S	W, B, S	W, B, S	W, B, S
Floors		W, B, S	W, B, S	W, B, S	W, B, S	W, B, S
# of top doors		2	2	4	4	4
Door size		19.56" x 19.25"	29.81" x 19.25"	19.56" x 19.25"	23.81" x 19.25"	29.81" x 19.25"
# of bottom doors	SC	1 external	2	2	23	4
	R	2	2	2	4	4
# of coils		1	1	1	1	1
Bottom storage		YES	YES	YES	YES	YES
Front glass		26" x 45"	26" x 66"	26" x 90"	26" x 114"	26" x 138"
Cubic capacity		30	45	60	75	90
Mezzanine shelf		Optional	Optional	Optional	Optional	Optional
Shipping Info						
Height		58"	58"	58"	58"	58"
Depth		44"	44"	44"	44"	44"
Length		61"	87"	109"	135"	157"
Gross weight SC/R		500/460	645/595	900/845	1230/1175	1344/1295
Cubic feet		90	128	160	200	231

(ALL WHITE OR ALL BLACK, NO EXTRA CHARGE—IF COLORS ARE MIXED AN ADDITIONAL CHARGE WILL APPLY)

Prefix

SC = Self-contained
R = Remote

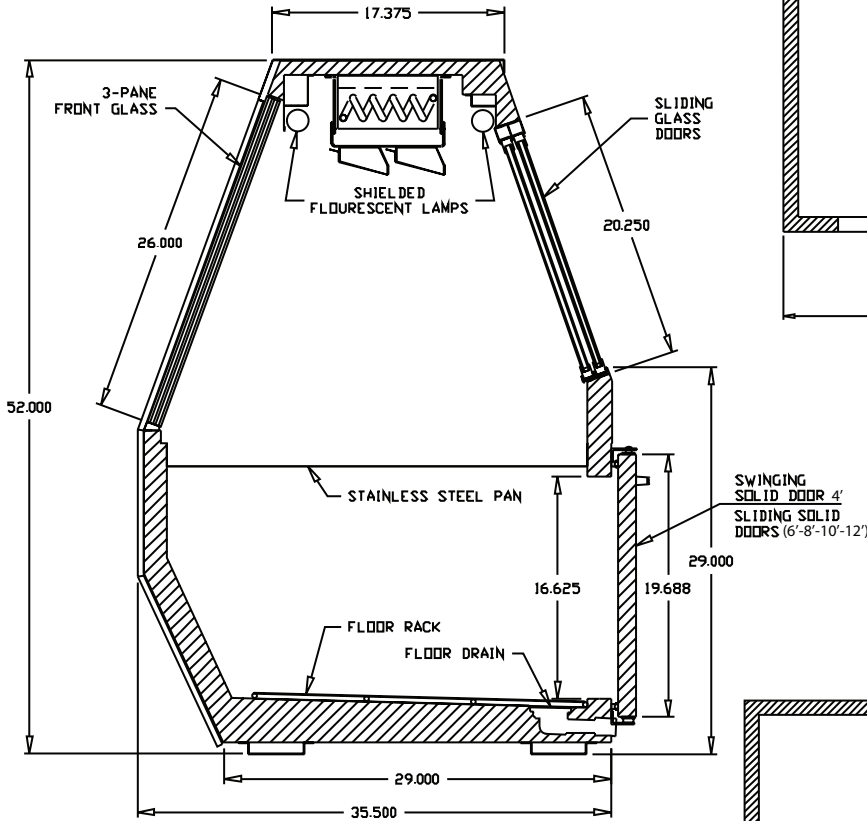
Suffix

B = Black
W = White
S = Stainless Steel
LS = T8 lighting
LED = LED lighting

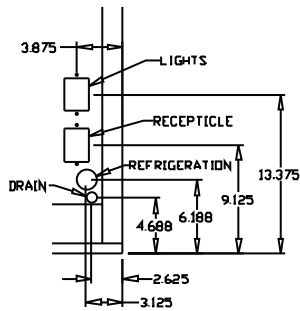
- Cases are designed to operate at 75 degrees Fahrenheit and 55% relative humidity
- Cases are equipped with drains; check your local building codes for connection requirements.
- Specification subject to change without notice

35 Series Service Case Double Duty - Fish and Poultry

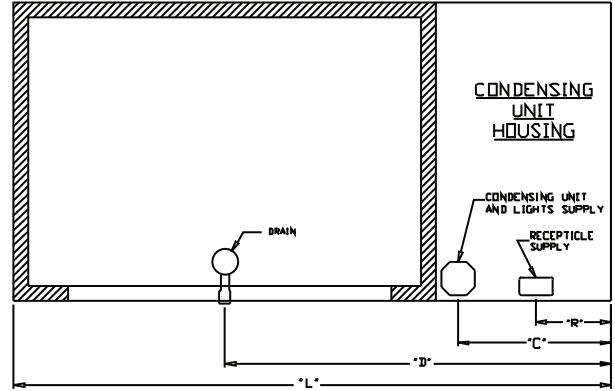
Technical Data • Side View • Plan View



Cross Section

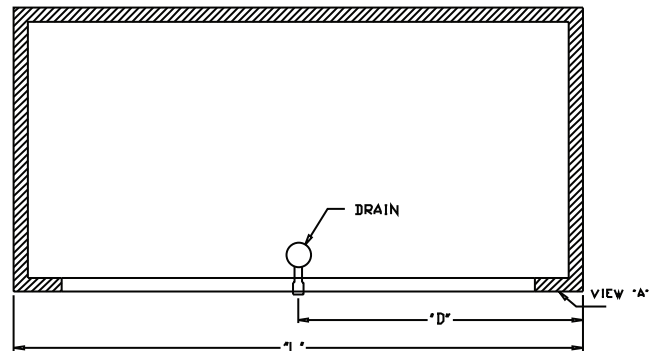


VIEW "A"



SIZE	"L"	"R"	"C"	"D"
4	50	25	25	33
6	71	9	18.250	45.875
8	95	9	18.250	57.875
10	119	9	18.250	69.875
12	143	9	18.250	81.875

Plan View Self-contained



SIZE	"L"	"D"
4	50	25
6	71	35.500
8	95	47.500
10	119	59.500
12	143	61.500

Plan View Remote

**35 Series Service Case - Low Profile 44" H
Double Duty - Deli**



Model No.	Description	Length	Depth	Height	Voltage	Amps	HP/BTUs	Power Cord	Est. Ship Weight
SC-CDS35-4L	Self-contained	50"	37.5"	44"	115	12.0	1/4	YES	480
SC-CDS35-6L	Self-contained	71"	37.5"	44"	115	12.0	1/3	YES	625
SC-CDS35-8L	Self-contained	95"	37.5"	44"	115	16.0	1/3	YES	880

MODEL NUMBER PREFIX - SC = Self-contained R = Remote
 MODEL NUMBER SUFFIX - W = White B = Black S = Stainless Steel LED = LED - lighting
 • Cases are designed to operate at 75 degrees Fahrenheit and 55% relative humidity
 • Cases are equipped with drains; check your local building codes for connection requirements.
 • Specification subject to change without notice
 IF COLORS ARE MIXED AN ADDITIONAL CHARGE WILL APPLY



35 Series Service Case - Low Profile 44" H Double Duty - Deli

Standard Specifications and Optional Features

CONSTRUCTION

- UL - Classified to ANSI/NSF 7
- Foamed in place CFC free foam
- Thermal insulated front glass - 26" H
- Heavy gauge steel super structure
- Bottom storage
- Drain is included for cleaning

INTERIOR

- White, black or stainless steel ends
- Stainless steel heavy gauge mezzanine shelf
- Air insulated baffle (prevents moisture from dripping into display area)
- Epoxy coated main deck shelves

EXTERIOR

- Double pane rear removable doors
- Newly designed rear compression door jamb
- Removable front grille allows for cleaning
- Removable rear grille for easy servicing
- 1" bumper

FINISHES

- White, black or stainless steel front and ends
- Stainless steel mirror trim
- Stainless steel heavy gauge top - 17.375" W
- Bottom rear is designer white, black or stainless steel aluminum

LIGHTING

- 2 rows of lighting at top of unit

ELECTRICAL REQUIREMENTS

- 115V 4', 6', & 8' with power cord
- UL/CUL listed
- 115V-5AMP general purpose receptacle

REFRIGERATION

- Copevap system (eliminates need for condensate pan)
- R134a expansion valve system
- Gravity coil located at inside top of unit
- Self-contained unit
- Automatic defrost electronically controlled (Self-contained units only)
- Electronically control maintains constant temperatures
- Remotes available

OPTIONS

- Scale stand
- Paper cutter
- Stainless steel, laminate, or paint
- Mirrored doors
- Extra row of mezzanine shelf
- Drop work shelf
- 2" Front bumper
- Door locks
- Digital thermometer
- Pass thru front doors
- Sandwich racks

Important Note:

All refrigerated cases are designed to operate in an environment of 75 degrees and 55% relative humidity. Product must be cooled before being displayed within the case.

DRAIN IS REQUIRED

35 Series Service Case - Low Profile 44" H Double Duty - Deli

Technical Data

Model No.		SC-CDS35-4L	SC-CDS35-6L	SC-CDS35-8L
Length		50"	71"	95"
Height		44"	44"	44"
Depth		35.5"	35.5"	35.5"
Depth with bottom door		37.5"	37.5"	37.5"
(Dimensions are +/- 1/4")				
Operating temperature		36°F to 40°F	36°F to 40°F	36°F to 40°F
Refrigerant (expansion valve)		R134a	R134a	R134a
Compressor size HP		1/4	1/3	1/3
Defrost per day (24 hours)	Air Defrost	2 per day	2 per day	2 per day
Voltage		115	115	115
Amperage		12.0	12.0	16.0
Cord and plug		YES	YES	YES
Exterior color		W, B, S	W, B, S	W, B, S
Interior color		W, B, S	W, B, S	W, B, S
Floors		W, B, S	W, B, S	W, B, S
# of top doors		2	2	2
Door size		19.56" x 19.25"	29.81" x 19.25"	19.56" x 19.25"
# of bottom doors		1	2	3
Front glass		26" x 45"	26" x 66"	26" x 90"
# of coils		2	2	2
Bottom storage		YES	YES	YES
# of main deck shelves		2	3	4
Main deck size		22.25" x 31.625"	22.25" x 31.625"	22.25" x 31.625"
Cubic capacity		23	34	45
Mezzanine shelf		Standard	Standard	Standard
Shipping Info				
Height		58"	58"	58"
Depth		44"	44"	44"
Length		61"	87"	109"
Gross weight		480	625	880
Cubic feet		89	128	164

(ALL WHITE OR ALL BLACK, NO EXTRA CHARGE—IF COLORS ARE MIXED AN ADDITIONAL CHARGE WILL APPLY)

Prefix

SC = Self-contained
R = Remote

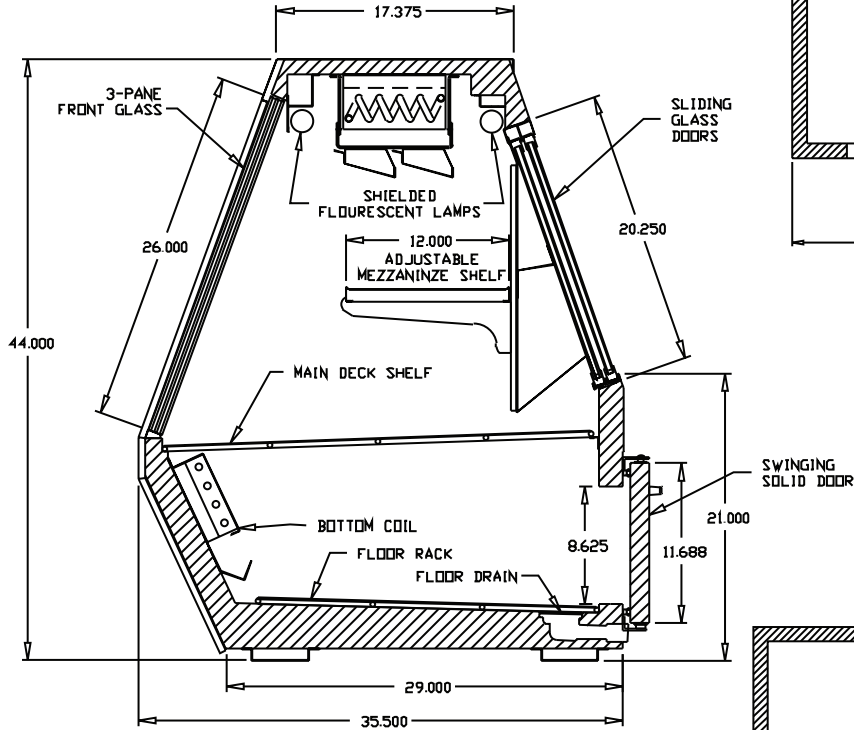
Suffix

B = Black
W = White
S = Stainless Steel
LS = T8 lighting
LED = LED lighting

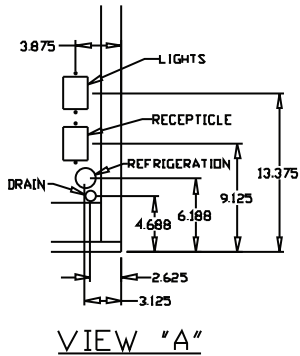
- Cases are designed to operate at 75 degrees Fahrenheit and 55% relative humidity
- Cases are equipped with drains; check your local building codes for connection requirements.
- Specification subject to change without notice

35 Series Service Case - Low Profile 44" H Double Duty - Deli

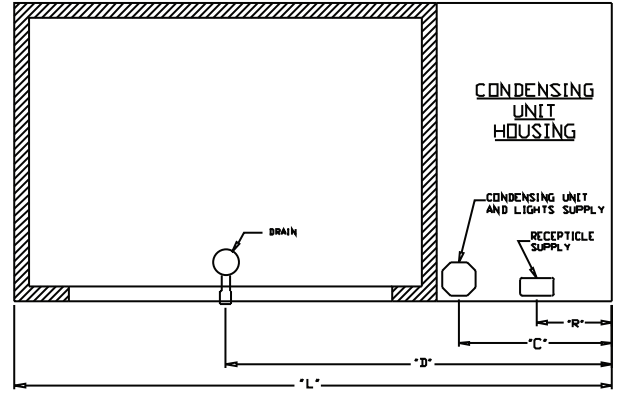
Technical Data • Side View • Plan View



Cross Section

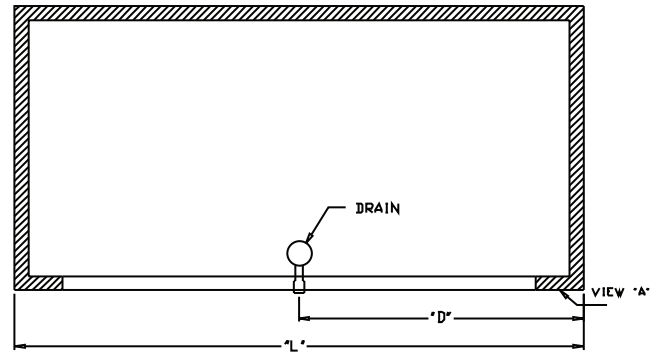


VIEW "A"



SIZE	"L"	"R"	"C"	"D"
4	50	25	25	33
6	71	9	18.250	45.875
8	95	9	18.250	57.875
10	119	9	18.250	69.875
12	143	9	18.250	81.875

Plan View Self-contained



SIZE	"L"	"D"
4	50	25
6	71	35.500
8	95	47.500
10	119	59.500
12	143	61.500

Plan View Remote

**35 Series Service Case
Single Duty - Hot Food Case**



Model No.	Description	Length	Depth	Height	Voltage	Amps	Power Cord	Est. Ship Weight
CHS35-4	3 Wells	50"	35.5"	52"	120/240/3	4.4/11.6	NO	480
CHS35-6	4 Wells	71"	35.5"	52"	120/240/3	5.8/17.6	NO	625
CHS35-8	6 Wells	95"	35.5"	52"	120/240/3	8.7/23.1	NO	880

MODEL NUMBER PREFIX - SC = Self-contained R = Remote
 MODEL NUMBER SUFFIX - W = White B = Black S = Stainless Steel
 • Cases are designed to operate at 75 degrees Fahrenheit and 55% relative humidity
 • Cases are equipped with drains; check your local building codes for connection requirements.
 • Specification subject to change without notice
 IF COLORS ARE MIXED AN ADDITIONAL CHARGE WILL APPLY



35 Series Service Case Single Duty - Hot Food Case

Standard Specifications and Optional Features

CONSTRUCTION

- Foamed in place CFC free foam
- Single pane tempered front safety glass
- Heavy gauge steel super structure
- ETL listed for safety and sanitation

INTERIOR

- White, black or stainless steel ends
- Stainless steel deck area around wells (for easy cleaning)
- Wet or dry heated individual wells
- Individual thermostatically controlled wells
- Separate drain for each well
- Flood lamp over each well

EXTERIOR

- White, black or stainless steel exterior
- Double pane rear removable doors
- Newly designed rear compression door jamb
- Heavy duty bright stainless steel top
- Vented front minimizes moisture on glass
- 1" front bumper

FINISHES

- White, black or stainless steel front and ends
- Stainless steel mirror trim
- Stainless steel heavy gauge top - 17.375" W
- White, black or stainless steel exterior rear

LIGHTING

- Individual heat lamps over each well - 175W each

Important Note:

All cases are designed to operate in an environment of 75 degrees and 55% relative humidity.

DRAIN IS REQUIRED

Electrical Requirements

Model No.	Wells	Volts	Phase	AMPS
CHS35-4	3	120V/208V	1	4.4A/17.3A
		120V/240V	1	4.4A/20.0A
		120V/208V	3	4.4A/10.0A
		120V/240V	3	4.4A/11.6A
CHS35-6	4	120V/208V	1	5.8A/23.1A
		120V/240V	1	5.8A/26.7A
		120V/208V	3	5.8A/15.3A
		120V/240V	3	5.8A/17.6A
CHS35-8	6	120V/208V	1	8.7A/34.6A
		120V/240V	1	8.7A/40.0A
		120V/208V	3	8.7A/20.0A
		120V/240V	3	8.7A/23.1A

35 Series Service Case Single Duty - Hot Food Case

Technical Data

Model No.	CHS35-4	CHS35-6	CHS35-8
Length	50"	71"	95"
Height	52"	52"	52"
Depth	35.5"	35.5"	35.5"
# of wells	3	4	6
(Dimensions are +/- 1/4")			
Voltage - standard	120/240	120/240	120/240
Phase	3	3	3
Amperage	4.4/11.6	5.8/17.6	8.7/23.1
Voltage - optional	120/240	120/240	120/240
Phase	1	1	1
Amperage	4.4/20	5.8/26.7	8.7/40
Voltage - optional	120/208	120/208	120/208
Phase	3	3	3
Amperage	3.8/10	5.8/15.3	8.7/20
Voltage - optional	120/208	120/208	120/208
Phase	1	1	1
Amperage	4.4/17.3	5.8/23.1	7.5/34.6
Exterior color	W, B, S	W, B, S	W, B, S
Interior color	W, B, S	W, B, S	W, B, S
Floors	W, B, S	W, B, S	W, B, S
# of top rear doors	2	2	4
Front viewing area	21"	21"	21"
Bottom Storage	NO	NO	NO
Door size	19.56" x 19.25"	29.81" x 19.25"	19.56" x 19.25"
Shipping Info			
Height	58"	58"	58"
Depth	44"	44"	44"
Length	61"	87"	109"
Gross weight	450	595	850
Cubic feet	90	128	164

(ALL WHITE OR ALL BLACK, NO EXTRA CHARGE—IF COLORS ARE MIXED AN ADDITIONAL CHARGE WILL APPLY)

Prefix

SC = Self-contained
R = Remote

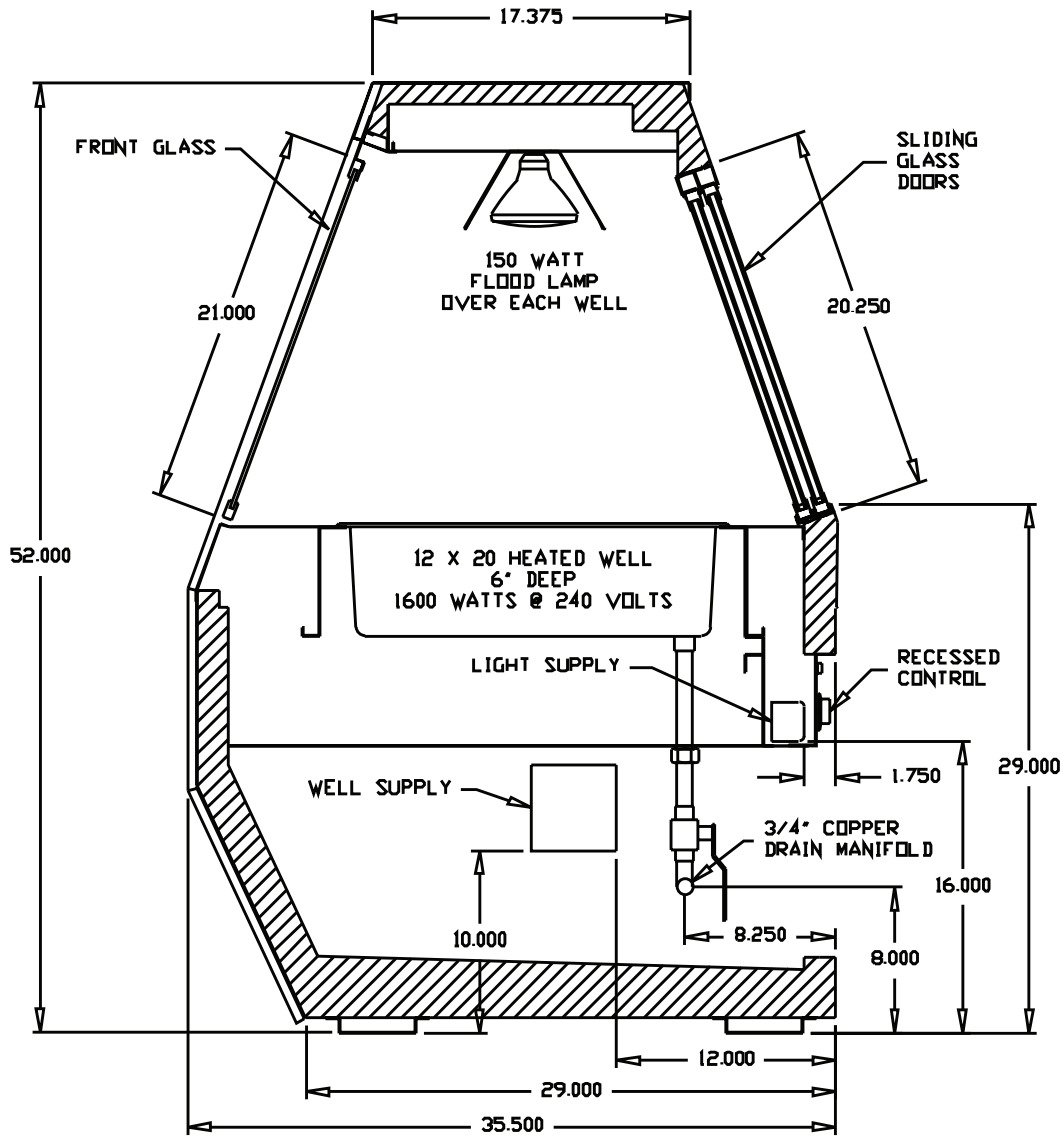
Suffix

B = Black
W = White
S = Stainless Steel

- Cases are designed to operate at 75 degrees Fahrenheit and 55% relative humidity
- Cases are equipped with drains; check your local building codes for connection requirements.
- Specification subject to change without notice

35 Series Service Case Single Duty - Hot Food Case

Technical Data • Side View • Plan View



Cross Section