

**35 Series Service Case  
Single Duty - Hot Food Case**



Model No.	Description	Length	Depth	Height	Voltage	Amps	Power Cord	Est. Ship Weight
<b>CHS35-4</b>	3 Wells	50"	35.5"	52"	120/240/3	4.4/11.6	NO	480
<b>CHS35-6</b>	4 Wells	71"	35.5"	52"	120/240/3	5.8/17.6	NO	625
<b>CHS35-8</b>	6 Wells	95"	35.5"	52"	120/240/3	8.7/23.1	NO	880

MODEL NUMBER PREFIX - SC = Self-contained R = Remote  
 MODEL NUMBER SUFFIX - W = White B = Black S = Stainless Steel  
 • Cases are designed to operate at 75 degrees Fahrenheit and 55% relative humidity  
 • Cases are equipped with drains; check your local building codes for connection requirements.  
 • Specification subject to change without notice  
 IF COLORS ARE MIXED AN ADDITIONAL CHARGE WILL APPLY



## 35 Series Service Case Single Duty - Hot Food Case

### Standard Specifications and Optional Features

#### CONSTRUCTION

- Foamed in place CFC free foam
- Single pane tempered front safety glass
- Heavy gauge steel super structure
- ETL listed for safety and sanitation

#### INTERIOR

- White, black or stainless steel ends
- Stainless steel deck area around wells (for easy cleaning)
- Wet or dry heated individual wells
- Individual thermostatically controlled wells
- Separate drain for each well
- Flood lamp over each well

#### EXTERIOR

- White, black or stainless steel exterior
- Double pane rear removable doors
- Newly designed rear compression door jamb
- Heavy duty bright stainless steel top
- Vented front minimizes moisture on glass
- 1" front bumper

#### FINISHES

- White, black or stainless steel front and ends
- Stainless steel mirror trim
- Stainless steel heavy gauge top - 17.375" W
- White, black or stainless steel exterior rear

#### LIGHTING

- Individual heat lamps over each well - 175W each

#### Important Note:

All cases are designed to operate in an environment of 75 degrees and 55% relative humidity.

**DRAIN IS REQUIRED**

#### Electrical Requirements

Model No.	Wells	Volts	Phase	AMPS
<b>CHS35-4</b>	3	120V/208V	1	4.4A/17.3A
		120V/240V	1	4.4A/20.0A
		120V/208V	3	4.4A/10.0A
		120V/240V	3	4.4A/11.6A
<b>CHS35-6</b>	4	120V/208V	1	5.8A/23.1A
		120V/240V	1	5.8A/26.7A
		120V/208V	3	5.8A/15.3A
		120V/240V	3	5.8A/17.6A
<b>CHS35-8</b>	6	120V/208V	1	8.7A/34.6A
		120V/240V	1	8.7A/40.0A
		120V/208V	3	8.7A/20.0A
		120V/240V	3	8.7A/23.1A

## 35 Series Service Case Single Duty - Hot Food Case

### Technical Data

Model No.	CHS35-4	CHS35-6	CHS35-8
Length	50"	71"	95"
Height	52"	52"	52"
Depth	35.5"	35.5"	35.5"
# of wells	3	4	6
<b>(Dimensions are +/- 1/4")</b>			
Voltage - standard	120/240	120/240	120/240
Phase	3	3	3
Amperage	4.4/11.6	5.8/17.6	8.7/23.1
Voltage - optional	120/240	120/240	120/240
Phase	1	1	1
Amperage	4.4/20	5.8/26.7	8.7/40
Voltage - optional	120/208	120/208	120/208
Phase	3	3	3
Amperage	3.8/10	5.8/15.3	8.7/20
Voltage - optional	120/208	120/208	120/208
Phase	1	1	1
Amperage	4.4/17.3	5.8/23.1	7.5/34.6
Exterior color	W, B, S	W, B, S	W, B, S
Interior color	W, B, S	W, B, S	W, B, S
Floors	W, B, S	W, B, S	W, B, S
# of top rear doors	2	2	4
Front viewing area	21"	21"	21"
Bottom Storage	NO	NO	NO
Door size	19.56" x 19.25"	29.81" x 19.25"	19.56" x 19.25"
<b>Shipping Info</b>			
Height	58"	58"	58"
Depth	44"	44"	44"
Length	61"	87"	109"
Gross weight	450	595	850
Cubic feet	90	128	164

**(ALL WHITE OR ALL BLACK, NO EXTRA CHARGE—IF COLORS ARE MIXED AN ADDITIONAL CHARGE WILL APPLY)**

**Prefix**

SC = Self-contained  
R = Remote

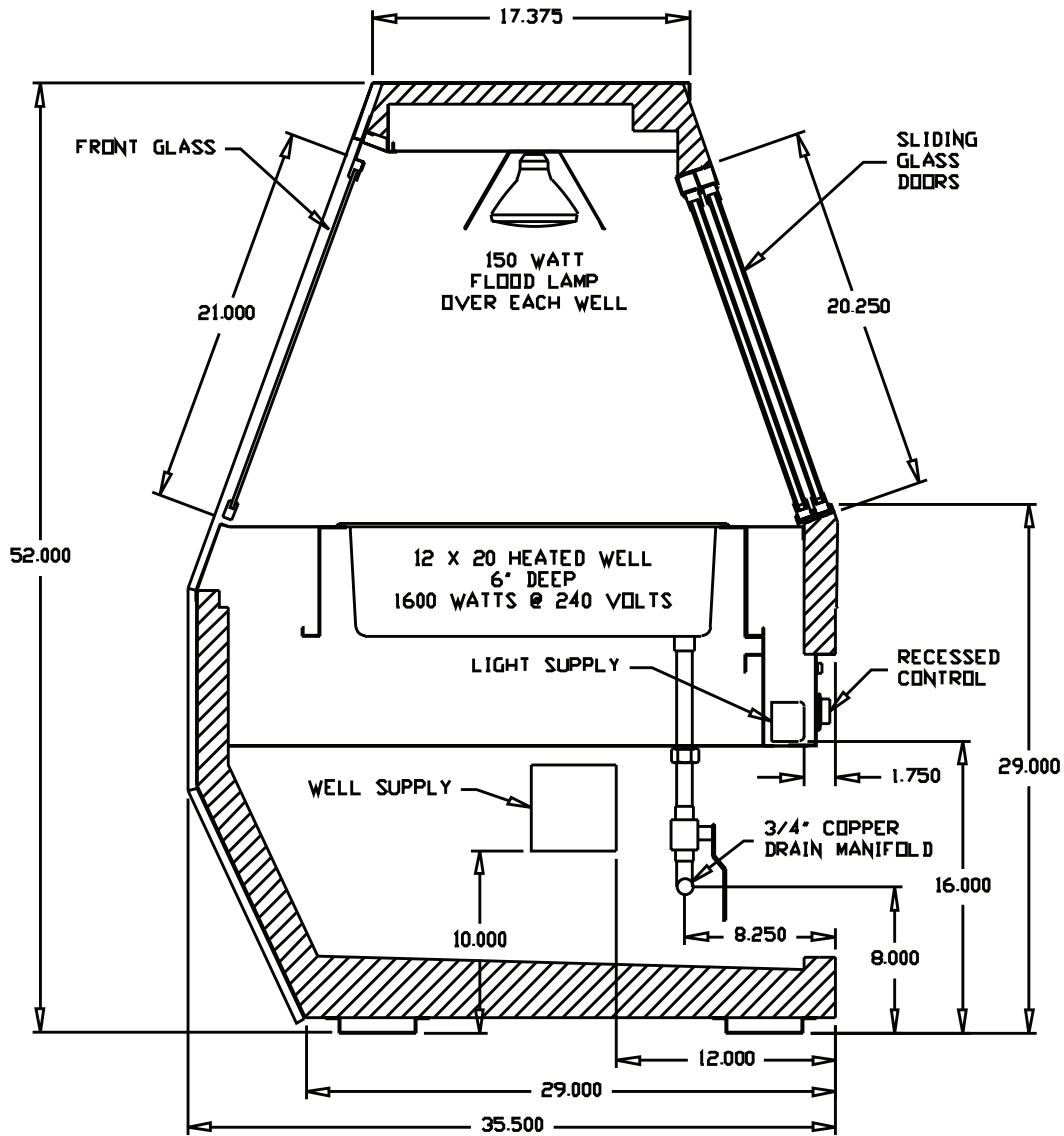
**Suffix**

B = Black  
W = White  
S = Stainless Steel

- Cases are designed to operate at 75 degrees Fahrenheit and 55% relative humidity
- Cases are equipped with drains; check your local building codes for connection requirements.
- Specification subject to change without notice

## 35 Series Service Case Single Duty - Hot Food Case

### Technical Data • Side View • Plan View



Cross Section