

## 40E Series - Endless Design Single Duty - Deli

- PRODUCT SPECIFICATIONS SHEETS



- Cases are designed to operate at 75 degrees Fahrenheit and 55% relative humidity

Self-Contained Remote	SC-CDS40E-4 R-CDS40E-4	SC-CDS40E-6 R-CDS40E-6	SC-CDS40E-8 R-CDS40E-8	SC-CDS40E-10 R-CDS40E-10	SC-CDS40E-12 R-CDS40E-12
Length with (2) ends	52-1/2"	76-1/2"	100-1/2"	124-1/2"	148-1/2"
Length without ends	48"	72"	96"	120"	144"
Height with ends	53"	53"	53"	53"	53"
Height without ends	52-1/2"	52-1/2"	52-1/2"	52-1/2"	52-1/2"
Depth with ends	39"	39"	39"	39"	39"
Depth without ends	39-1/2"	39-1/2"	39-1/2"	39-1/2"	39-1/2"
Endless Design	YES	YES	YES	YES	YES

(Dimensions are +/-1/4")

- Specification subject to change without notice

## 40E Series - Endless Design Single Duty - Deli

### Standard Specifications and Optional Features

<p><b>CONSTRUCTION</b>          UL Classified to ANSI/NSF 7          Foamed in place CFC free foam          Triple pane insulated front glass- 28"H          Heavy gauge steel super structure          Single duty display          Endless design allows for continuous line up          Drain is included for cleaning</p>	<p><b>FINISHES</b>          Satin finish extrusion on doors and door tracks          Designer white or black exterior front and ends          Stainless steel mirror trim          Stainless steel heavy gauge top- 20" W          Rear of unit is stainless steel brush finish at top          Bottom rear is designer white aluminum</p>
<p><b>INTERIOR</b>          Designer white interior ends          Stainless steel heavy gauge mezzanine shelf (1row)          Epoxy coated main deck shelves          Air insulated baffle (<i>prevents moisture from dripping into display area</i>)</p>	<p><b>REFRIGERATION</b>          Copevap system (<i>eliminates need for condensate pan</i>)          R134a expansion valve system          Gravity coil located at <i>inside top of unit and</i>          Self contained system          Automatic defrost controlled by time clock-(<i>self contained units only</i>)          Pressure control maintains constant temperatures          Remotes available</p>
<p><b>EXTERIOR</b>          Double pane rear removable doors          Newly designed compression door jamb          Removable front grille allows for cleaning          Removable rear grille for easy servicing          2-1/4" removable end panels          Front bumper 1"- gray</p>	<p><b>LIGHTING</b>          2 Rows of T12 lighting at top of unit</p>
<p><b>ELECTRICAL REQUIREMENTS</b>          115V/60Hz/1Ph          Unit must be hard wired          UL/CUL listed          115V-12AMP general purpose receptacle (<i>wired separately</i>)</p>	<p><b>Important Note: All refrigerated cases are designed to operate in an environment of 75 degrees and 55% relative humidity.</b></p> <p><b>Important Note: Product must be cooled before being displayed within the case.</b></p>

### OPTIONAL FEATURES

<p>Scale stand          Paper cutter          Stainless steel, laminate, or paint          Mirrored doors          Extra stainless steel mezzanine shelf</p>	<p>Drop work shelf          Door locks          Digital thermometer          Sandwich racks          Salad pan settings          Front bumpers 3"</p>
--	---



## 40E Series - Endless Design Single Duty - Deli

### Technical Data

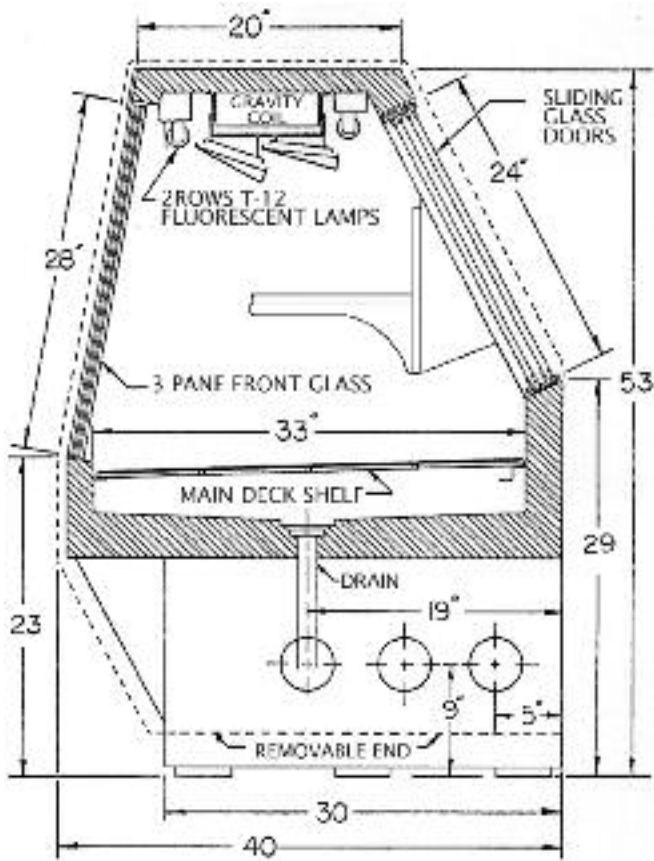
Model	Self contained	SC-CDS40E-4	SC-CDS40E-6	SC-CDS40E-8	SC-CDS40E-10	SC-CDS40E-12
	Remote	R-CDS40E-4	R-CDS40E-6	R-CDS40E-8	R-CDS40E-10	R-CDS40E-12
Length with (2) ends		52.5"	76.5"	100.5"	124.5"	148.5"
Length without ends		48"	72"	96"	120"	144"
Height with ends		53"	53"	53"	53"	53"
Height without ends		52.5 "	52.5 "	52.5"	52.5 "	52.5 "
Depth with ends		40"	40"	40"	40"	40"
Depth without ends		39.5"	39.5 "	39.5 "	39.5 "	39.5 "
Endless design (Dimensions are +/- 1/4")		YES	YES	YES	YES	YES
Operating temperature		36°F to 40°F	36°F to 40°F	36°F to 40°F	36°F to 40°F	36°F to 40°F
Refrigerant (expansion valve)	Self contained	R134a	R134a	R134a	R134a	R134a
Compressor size HP	Self contained	1/4	1/3	1/2	1/2	3/4
Pressure control settings @ 75°F, 55%RH						
	CUT IN	30	30	30	30	30
	CUT OUT	12	12	12	12	12
Defrost per day (24 hours)	Air Defrost	1 per day	1 per day	1 per day	1 per day	1 per day
BTU's at +20°F Evap. Temp.	Remote	1400	2100	2800	3500	4200
Voltage		115V	115V	115V	115v	115V
Amperage	Self contained	6.0A	8.7A	11.2A	13.8A	17.4A
Amperage, lights only	Remote	0.8A	1.3A	1.6A	2.4A	2.4A
Cord and plug		No	No	No	No	No
Exterior color		White	White	White	White	White
Interior color		Stainless	Stainless	Stainless	Stainless	Stainless
Inside end panels		White	White	White	White	White
Floors		White	White	White	White	White
# of top doors		2	2	4	4	4
Door size		20.5" x 23.5"	31" X 23.5"	20.5" x 23.5"	25.75"X23.5"	31" X 23.5"
# of coils		2	2	2	2	2
Bottom storage		No	No	No	No	No
Front glass		28"X46-11/16"	28"X70-11/16"	28"X94-11/16"	28"X118-11/16"	28"X142-11/16"
# of main deck shelves		2	3	4	5	6
Main deck size		23.5"x32.62"	23.5"x32.62	23.5"x32.62	23.5"x32.62	23.5"x32.62
Cubic capacity (ft <sup>3</sup> )				49		74
Mezzanine- Shelf		Standard	Standard	Standard	Standard	Standard

### SHIPPING INFORMATION

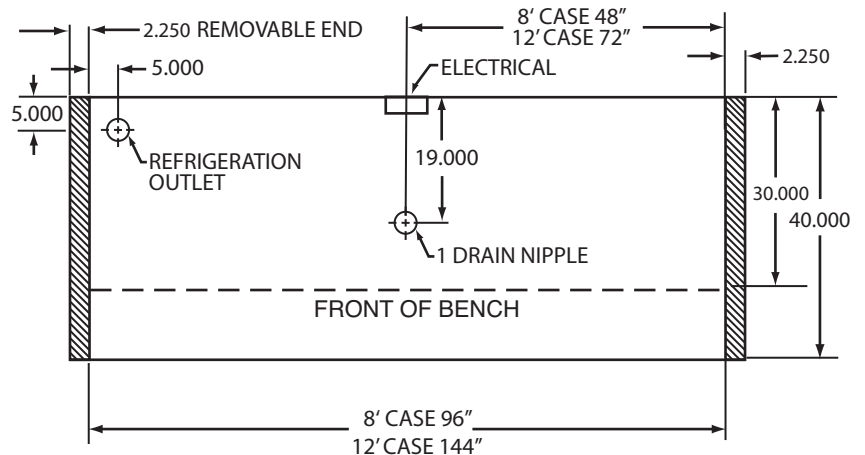
Height		58"	58"	58"	58"	58"
Depth		47"	47"	47"	47"	47"
Length		61"	87"	109"	135"	157"
Gross weight	Self contained	530#	741#	983#	1150#	1396#
	Remote	497#	693#	890#	1089#	1325#
Cubic feet		89ft <sup>3</sup>	128ft <sup>3</sup>	164ft <sup>3</sup>	199ft <sup>3</sup>	231ft <sup>3</sup>

- Cases are designed to operate at 75 degrees Fahrenheit and 55% relative humidity
- Cases are equipped with washout drains; check your local building codes for connection requirements.
- Specification subject to change without notice

### Technical Data • Side View • Plan View



Cross Section



Plan View