

GF Series - Reach In Hinged Glass Doors Freezer - Bottom Mount

• PRODUCT SPECIFICATIONS SHEETS



- Cases are designed to operate at 75 degrees Fahrenheit and 55% relative humidity

**Self-Contained
Remote**

**GF22BM
R-GF22BM**

**GF48BM
R-GF48BM**

**GF75BM
R-GF75BM**

**GF102BM
R-GF102BM**

Length

26-1/2"

52-1/4"

78"

103-3/4"

Height

82-1/4"

82-1/4"

82-1/4"

82-1/4"

Depth with drain cover

36-1/2"

36-1/2"

36-1/2"

36-1/2"

(Dimensions are +/-1/4")

- Specification subject to change without notice

GF Series - Reach In Hinged Glass Doors Freezer - Bottom Mount

Standard Specifications and Optional Features

<p>CONSTRUCTION UL Classified to ANSI/NSF 7 Heavy duty construction CFC free foamed in place insulation Removable front grille for easy servicing 1, 2, 3 or 4 door models available Heavy duty edge mounted hinges</p>	<p>FINISHES Doors-Anthony style 101-chrome finish Exterior-designer white Interior-designer white</p>
<p>INTERIOR White aluminum ends and back White aluminum floor Aluminum evaporator fan housing 4 Heavy duty epoxy coated shelves per door Mounted thermometer</p>	<p>REFRIGERATION Bottom mounted condensing unit R404A refrigeration 1, 2, 3, & 4 door-expansion valve Electric condensate pan Remote available</p>
<p>EXTERIOR White aluminum ends and fronts Triple pane glass doors 23-3/4"X62-1/4" <i>(provides wide view display)</i></p>	<p>LIGHTING Vertical light behind mullion 1 Dr = 1 light 2 Dr = 1 light 3 Dr = 2 lights 4 Dr = 3 lights</p>
<p>ELECTRICAL REQUIREMENTS 115V/208-230V/60Hz/1Ph Unit must be hard wired UL/CUL listed</p>	<p>Important Note: <i>All refrigerated cases are designed to operate in an environment of 75 degrees and 55% relative humidity.</i></p> <p>Important Note: <i>Product must be cooled before being displayed within the case.</i></p>

OPTIONAL FEATURES

<p>Stainless steel, laminate, or paint Digital or dial thermometer Door swing change</p>	<p>Extra shelf with clips Door locks 6" legs (black or stainless steel top mount units only)</p>
--	--



GF Series - Reach In Hinged Glass Doors Freezer - Bottom Mount

Technical Data

Model	Self contained	GF22BM	GF48BM	GF75BM	GF102BM
	Remote	R-GF22BM	R-GF48BM	R-GF75BM	R-GF102BM
Length Height Depth with drain cover (Dimensions are +/- 1/4")		26-1/2" 82-1/4" 36-1/2"	52-1/4" 82-1/4" 36-1/2 "	78" 82-1/4" 36-1/2 "	103-3/4" 82-1/4" 36-1/2 "
Operating temperature Refrigerant (expansion valve) Compressor size- HP Temperature control setting @ 75F at 55%	Self contained Self contained	-10°F to 0°F R404A 3/4	-10°F to 0°F R404A 1-1/2	-10°F to 0°F R404A 1-3/4	-10°F to 0°F R404A (2) 1-1/2
Defrost per day (24 hours) BTU's at -35°F Evap. Temp. Voltage Amperage Amperage- lights,fan&remote Cord and plug	CUT IN CUT OUT Electric Remote Self contained Remote	30 10 3 @ 30 min. 2160 115/208-230V 11.8A N/A No	30 10 3 @ 30 min. 4060 115/208-230V 4.2/11.0A 5.6/6.5A No	30 10 3 @ 30 min. 5150 115/208-230V 5.2/11.8A 7.4/8.6A No	30 10 3 @ 30 min. 8120 115/208-230V 8.3/11.0A 10.4/6.5A No
Exterior color Interior color Inside end panels Floors Drain Electric Condensate Total shelves Door size Cubic capacity (ft ³)		White White White White Yes 4 23-3/4"X62-1/4" 22	White White White White Yes 8 23-3/4"X62-1/4" 48	White White White White Yes 12 23-3/4"X62-1/4" 75	White White White White Yes 16 23-3/4"X62-1/4" 102

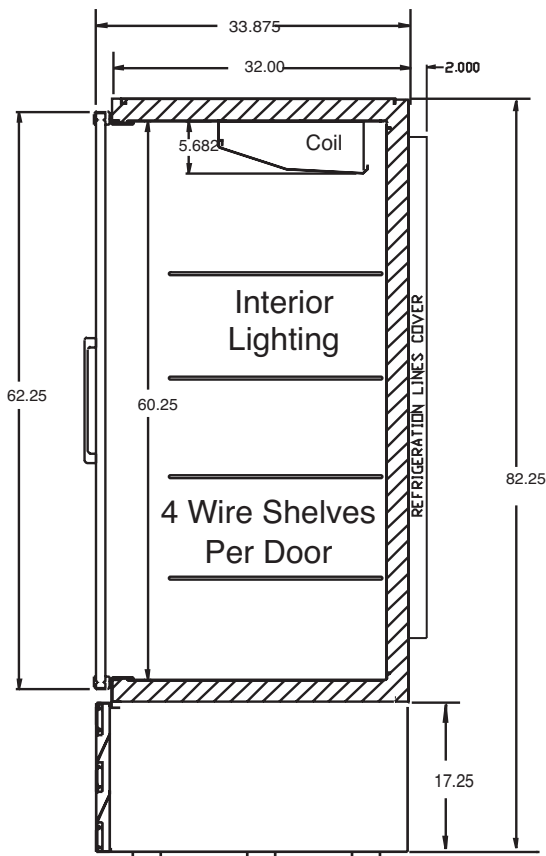
SHIPPING INFORMATION

Height		86"	86"	86"	86"
Depth		44"	44"	44"	44"
Length		31"	58"	84"	109"
Gross weight	Self contained Remote	410# 260#	610# 310#	810# 485#	1184# 884#
Cubic feet		77ft ³	125ft ³	182ft ³	236ft ³

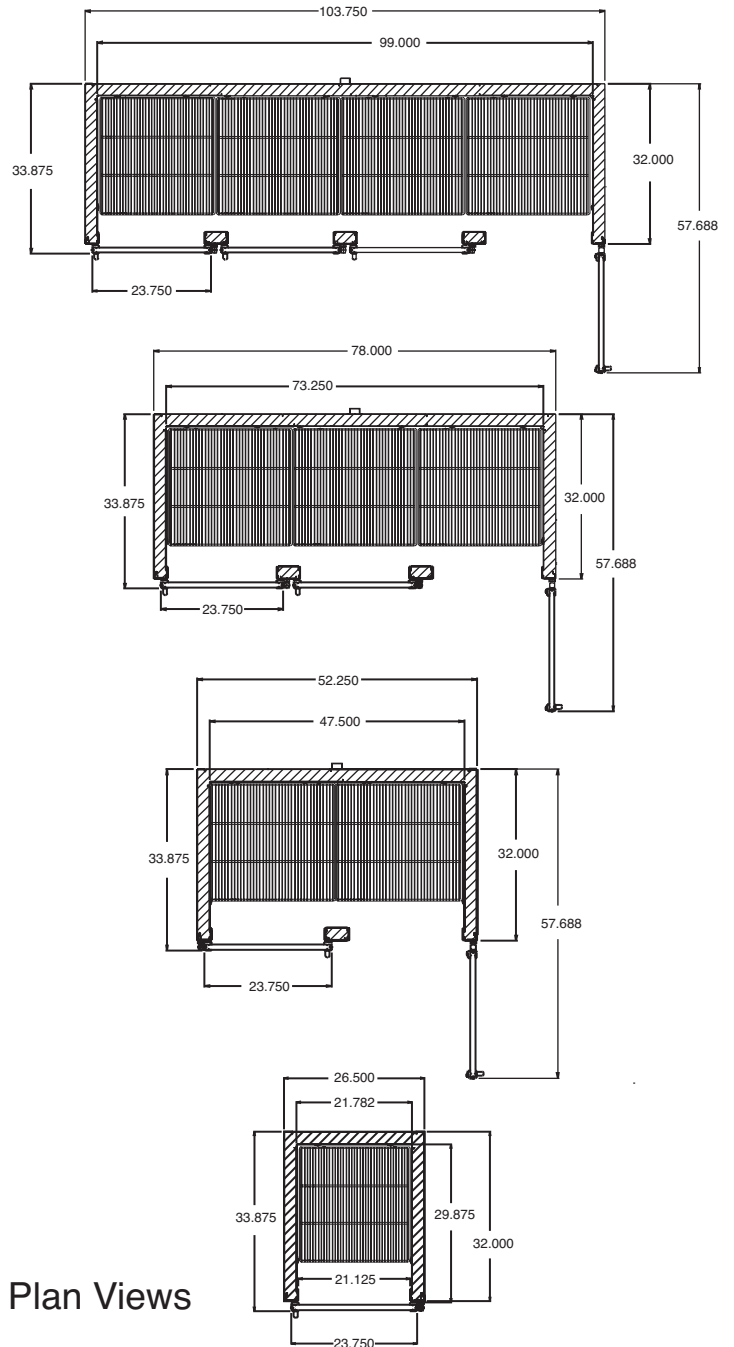
- Cases are designed to operate at 75 degrees Fahrenheit and 55% relative humidity
- Specification subject to change without notice

GF Series - Reach In Hinged Glass Doors Freezer - Bottom Mount

Technical Data • Side View • Plan View



Cross Section



Plan Views