

## RIF Endless Design - Glass Door Reach In Freezers - 24" and 30" Doors



Model No.	Description	Length	Depth	Height	Voltage Fans/Def	Amps Fans/Def 3ph	BTUs FF*/ICE*	Power Cord	Est. Ship Weight
<b>24" Doors</b>									
<b>RIF2-24</b>	Two Doors	54.88"	35.5"	78.5"	115/230	5.8/5.4	3804/3980	NO	729
<b>RIF3-24</b>	Three Doors	78.88"	35.5"	78.5"	115/230	8.2/8.2	5577/5829	NO	1031
<b>RIF4-24</b>	Four Doors	102.38"	35.5"	78.5"	115/230	10.6/11.1	7173/7500	NO	1333
<b>RIF5-24</b>	Five Doors	126.13"	35.5"	78.5"	115/230	13.1/13.9	8829/9231	NO	1635
<b>30" Doors</b>									
<b>RIF2-30</b>	Two Doors	68.00"	35.5"	78.5"	115/230	6.4/6.9	4653/4873	NO	818
<b>RIF3-30</b>	Three Doors	98.50"	35.5"	78.5"	115/230	8.8/10.1	6550/6866	NO	1160
<b>RIF4-30</b>	Four Doors	128.50"	35.5"	78.5"	115/230	11.4/13.1	8484/8897	NO	1635
<b>RIF5-30</b>	Five Doors	162.00"	35.5"	78.5"	115/230	14.1/17	10450/10961	NO	1980

MODEL NUMBER PREFIX - SC = Self Contained R = Remote  
 MODEL NUMBER SUFFIX - W = White B = Black S = Stainless Steel LED = LED lighting  
 • Cases are designed to operate at 75 degrees Fahrenheit and 55% relative humidity  
 • Cases are equipped with drains; check your local building codes for connection requirements.  
 • Specification subject to change without notice  
 IF COLORS ARE MIXED AN ADDITIONAL CHARGE WILL APPLY



## RIF Endless Design - Glass Door Reach In Freezers - 24" and 30" Doors Standard Specification and Optional Features

### CONSTRUCTION

- UL Classified to ANSI/NSF 7
- Heavy Duty Construction
- Foamed in place CFC free foam
- 2, 3, 4, or 5 door models available
- Inset door assembly
- Endless design for continuous line ups

### INTERIOR

- White aluminum ends (optional black or stainless steel)
- White back with perforated aluminum (optional black or stainless steel)
- Removable floor pans
- 5 Heavy duty epoxy coated shelves per door white or black

### EXTERIOR

- White aluminum ends and front (optional black or stainless steel)
- Double pane glass doors 24" x 63", 30" x 63"
- Black kick plate
- Chrome frame assembly and doors

### LIGHTING

- 60" T8 or LED
- 2 Dr = 3 lights or 3 LED strips
- 3 Dr = 4 lights or 4 LED strips
- 4 Dr = 5 lights or 5 LED strips
- 5 Dr = 6 lights or 6 LED strips

### ELECTRICAL REQUIREMENTS

- Electric defrost and defrost termination, standard 230V/3ph/60HZ
- ECM fans and lighting - 115V/1ph/60HZ
- Unit must be hard wired
- UL/CUL listed

### REFRIGERATION

- R407A expansion valve included
- Condensing unit and other hook ups are NOT INCLUDED
- Coil and fans located below floor plans

### OPTIONAL FEATURES

- Door swing change
- Insulated divider for lineups
- Plexiglass divider
- Joint kit
- Temperature control thermostat
- Solenoid valve
- Contactor
- Laminated or painted exterior

### Important Note:

All refrigerated cases are designed to operate in an environment of 75 degrees and 55% relative humidity. Product must be cooled before being displayed within the case.

**DRAIN IS REQUIRED**

## Shipping Information

Model No.		RIF2-24 RIF2-24-LED	RIF3-24 RIF3-24-LED	RIF4-24 RIF4-24-LED	RIF5-24 RIF5-24-LED
<b>Shipping Info</b>					
<b>Height</b>		83"	83"	83"	83"
<b>Length</b>		61"	86"	107"	134"
<b>Depth</b>		43"	43"	43"	43"
<b>Gross weight</b>		729	1031	1333	1635
<b>Cubic Feet</b>		125	177	221	276

Model No.		RIF2-30 RIF2-30-LED	RIF3-30 RIF3-30-LED	RIF4-30 RIF4-30-LED	RIF5-30 RIF5-30-LED
<b>Shipping Info</b>					
<b>Height</b>		83"	83"	83"	83"
<b>Length</b>		74"	107"	134"	171"
<b>Depth</b>		43"	43"	43"	43"
<b>Gross weight</b>		818	1160	1635	1980
<b>Cubic Feet</b>		153	221	277	353

## RIF Endless Design - Glass Door Reach In Freezers - 24" and 30" Doors Technical Data

Model No. 24" Door model		RIF2-24 RIF2-24-LED	RIF3-24 RIF3-24-LED	RIF4-24 RIF4-24-LED	RIF5-24 RIF5-24-LED
Length		54.88"	78.88"	102.38"	126.13"
Height		78.5"	78.5"	78.5"	78.5"
Depth with drain cover		35.5"	35.5"	35.5"	35.5"
(Dimensions are +/- 1/4")					
Operating temperature		0°F to -15°F	0°F to -15°F	0°F to -15°F	0°F to -15°F
Refrigerant (expansion valve)		R407A	R407A	R407A	R407A
Defrost per day (24hrs)	1 Defrost	1	1	1	1
BTU's at -25°F Evap. Temp. FF*	0°F to -5°F	3840	5577	7173	8829
BTU's at -35°F Evap. Temp. Low*	-5° +F	3980	5829	7500	9231
Voltage		115/230	115/230	115/230	115/230
Amperage 115V, lights and fans		5.8	8.2	10.6	13.1
Amperage 230V, defrost, 3ph		5.4	8.2	11.1	13.9
Cord and plug		NO	NO	NO	NO
Exterior color		W, B, S	W, B, S	W, B, S	W, B, S
Interior color		W, B, S	W, B, S	W, B, S	W, B, S
Inside end panels		W, B, S	W, B, S	W, B, S	W, B, S
Floors - removeable deck pans		W, B, S	W, B, S	W, B, S	W, B, S
Drain required		YES	YES	YES	YES
Door size		23.75" x 62.69"	23.75" x 62.69"	23.75" x 62.69"	23.75" x 62.69"
Shelf (qty) and size		(10) 23.12" x 23"	(15) 23.12" x 23"	(20) 23.12" x 23"	(20) 23.12" x 23"
Model No. 30" Door model		RIF2-30 RIF2-30-LED	RIF3-30 RIF3-30-LED	RIF4-30 RIF4-30-LED	RIF5-30 RIF5-30-LED
Length		68"	98.5"	128.5"	162"
Height		78.5"	78.5"	78.5"	78.5"
Depth with drain cover		35.5"	35.5"	35.5"	35.5"
(Dimensions are +/- 1/4")					
Operating temperature		0°F to -15°F	0°F to -15°F	0°F to -15°F	0°F to -15°F
Refrigerant (expansion valve)		R407A	R407A	R407A	R407A
Defrost per day (24hrs)	1 Defrost	1	1	1	1
BTU's at -25°F Evap. Temp. FF*	0°F to -10°F	4653	6550	8484	10450
BTU's at -35°F Evap. Temp. Low*	-5°F+	4873	6866	8897	10961
Voltage		115/230	115/230	115/230	115/230
Amperage 115V, lights and fans		6.4	8.8	11.4	14.1
Amperage 230V, defrost, 3ph		6.9	10.1	13.1	17.0
Cord and plug		NO	NO	NO	NO
Exterior color		W, B, S	W, B, S	W, B, S	W, B, S
Interior color		W, B, S	W, B, S	W, B, S	W, B, S
Inside end panels		W, B, S	W, B, S	W, B, S	W, B, S
Floors - removeable deck pans		W, B, S	W, B, S	W, B, S	W, B, S
Drain required		YES	YES	YES	YES
Door size		29.75" x 62.69"	29.75" x 62.69"	29.75" x 62.69"	29.75" x 62.69"
Shelf (qty) and size		(10) 29.75" x 23"	(15) 29.75" x 23"	(20) 29.75" x 23"	(25) 29.75" x 23"

Prefix	Suffix
SC = Self Contained	B = Black
R = Remote	W = White
	S = Stainless Steel
	LS = T8 lighting
	LED = LED lighting

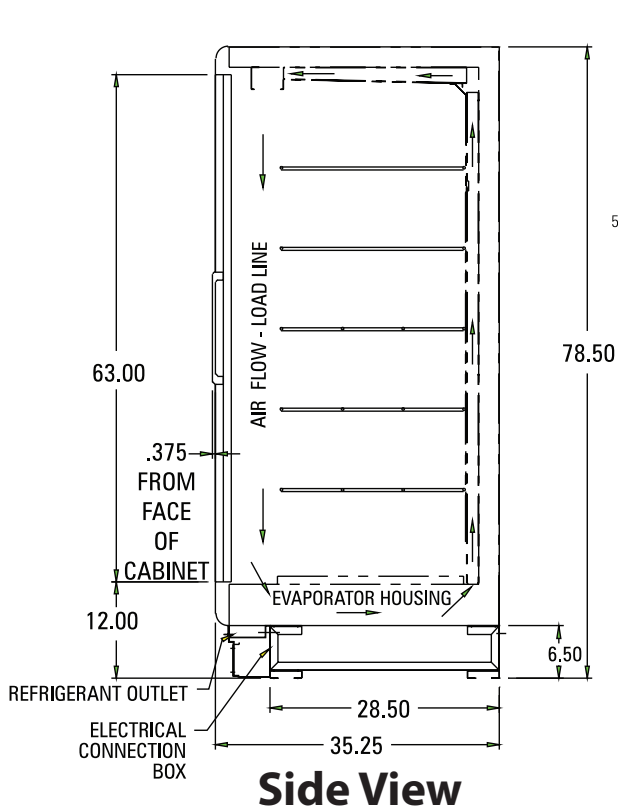
FF\* = Frozen Food Temps (0°F to -5°F) Low\* = Low Temps (-5°F+)

- Cases are designed to operate at 75 degrees Fahrenheit and 55% relative humidity
- Cases are equipped with drains; check your local building codes for connection requirements.
- Specification subject to change without notice

(ALL WHITE OR ALL BLACK, NO EXTRA CHARGE—  
IF COLORS ARE MIXED AN ADDITIONAL CHARGE WILL APPLY)

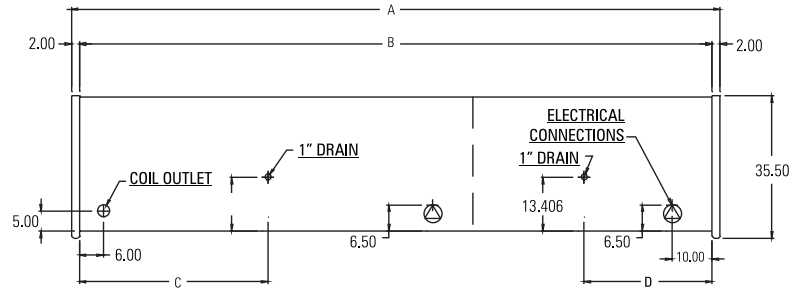
## RIF Endless Design - Glass Door Reach In Freezers - 24" and 30" Doors

### Technical Data • Side View • Plan View

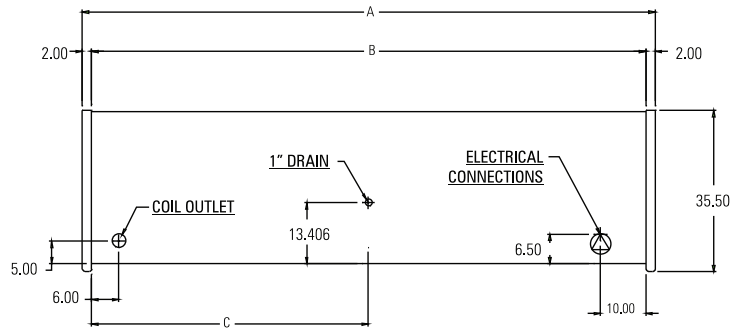


**Side View**

NOTE:  
RIF/RIN5-24 and 5-30 CABINETS ARE A COMBINATION OF  
(1) RIF/RIN3 AND (1) RIF/RIN2, MOUNTED TOGETHER  
WITH (2) COILS, (2) DRAINS, (2) ELECTRICAL CONNECTIONS

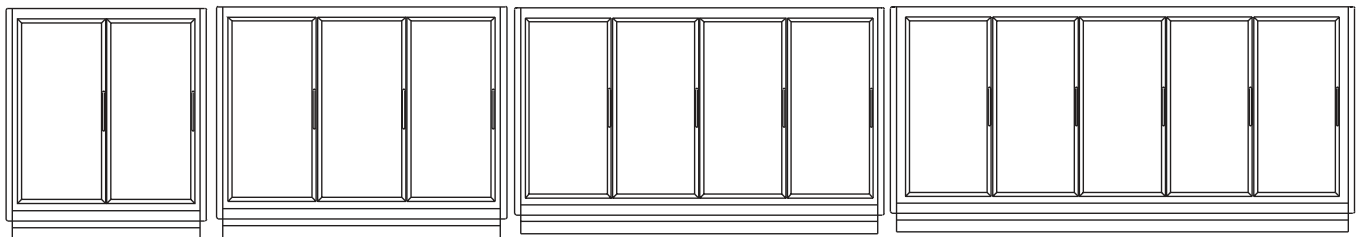
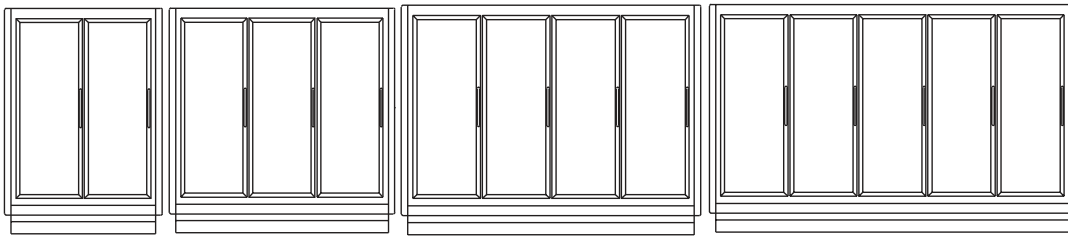


Model	A	B	C	D
RIF/RIN2-30	67-13/16"	63-13/16"	31-15/16"	
RIF/RIN3-30	98-13/16"	94-3/16"	47-1/6"	
RIF/RIN4-30	128-5/8"	124-5/8"	62-15/16"	
RIF/RIN5-30	162"	158"	47-1/16"	31-15/16"



Model	A	B	C
RIF/RIN2-24	54-7/8"	50-7/8"	25-3/16"
RIF/RIN3-24	78-7/8"	74-7/8"	37-1/16"
RIF/RIN4-24	102-3/8"	99-3/8"	48-15/16"
RIF/RIN5-24	126-1/8"	122-1/8"	37-1/6"

**Plan Views**



**Front Views**