

## RIN Endless Design - Glass Door Reach In Refrigerators - 24" and 30" Doors



| Model No.        | Power Description | Est. Ship Length | Depth | Height | Voltage | Amps | BTUs | Cord | Weight |
|------------------|-------------------|------------------|-------|--------|---------|------|------|------|--------|
| <b>24" Doors</b> |                   |                  |       |        |         |      |      |      |        |
| <b>RIN2-24</b>   | Two Door          | 54.88"           | 35.5" | 78.5"  | 115     | 4.1  | 2473 | NO   | 568    |
| <b>RIN3-24</b>   | Three Door        | 78.88"           | 35.5" | 78.5"  | 115     | 5.6  | 3471 | NO   | 832    |
| <b>RIN4-24</b>   | Four Door         | 102.38"          | 35.5" | 78.5"  | 115     | 7.3  | 4481 | NO   | 1096   |
| <b>RIN5-24</b>   | Five Door         | 126.13"          | 35.5" | 78.5"  | 115     | 9.0  | 5522 | NO   | 1360   |
| <b>30" Doors</b> |                   |                  |       |        |         |      |      |      |        |
| <b>RIN2-30</b>   | Two Door          | 68.00"           | 35.5" | 78.5"  | 115     | 4.2  | 2840 | NO   | 680    |
| <b>RIN3-30</b>   | Three Door        | 98.50"           | 35.5" | 78.5"  | 115     | 5.9  | 4064 | NO   | 1000   |
| <b>RIN4-30</b>   | Four Door         | 128.50"          | 35.5" | 78.5"  | 115     | 7.6  | 5206 | NO   | 1360   |
| <b>RIN5-30</b>   | Five Door         | 162.00"          | 35.5" | 78.5"  | 115     | 8.7  | 6439 | NO   | 1700   |

MODEL NUMBER PREFIX - SC = Self Contained R = Remote  
 MODEL NUMBER SUFFIX - W = White B = Black S = Stainless Steel LED = LED lighting  
 • Cases are designed to operate at 75 degrees Fahrenheit and 55% relative humidity  
 • Cases are equipped with drains; check your local building codes for connection requirements.  
 • Specification subject to change without notice  
 IF COLORS ARE MIXED AN ADDITIONAL CHARGE WILL APPLY



## RIN Endless Design - Glass Door

Reach In Refrigerators - 24" and 30" Doors

### Standard Specification and Optional Features

#### CONSTRUCTION

- UL Classified to ANSI/NSF 7
- Heavy Duty Construction
- Foamed in place CFC free foam
- 2, 3, 4, or 5 Door models available
- Inset door assembly
- Endless design for continuous line ups

#### INTERIOR

- White, black or stainless steel aluminum ends
- Perforated aluminum back
- Removable floor pans
- 5 Heavy duty epoxy coated shelves per door white or black

#### EXTERIOR

- White aluminum ends and front (optional black or stainless steel)
- Double pane glass doors 24" x 63", 30" x 63"
- Black kick plate
- Chrome frame assembly and doors

#### LIGHTING

- 60" T8 or LED
- 2 Dr = 3 lights or 3 LED strips
- 3 Dr = 4 lights or 4 LED strips
- 4 Dr = 5 lights or 5 LED strips
- 5 Dr = 6 lights or 6 LED strips

#### ELECTRICAL REQUIREMENTS

- ECM Fans and lighting - 115V
- Unit must be hard wired
- UL/CUL listed

#### REFRIGERATION

- R407A expansion valve Included
- Condensing unit and other hook ups are not included
- Coil and fans located below floor plans

#### OPTIONAL FEATURES

- Door swing change
- Insulated divider for lineups
- Plexiglass divider
- Joint kit
- Temperature control thermostat
- Solenoid valve
- Contactor
- Laminated or painted exterior

#### Important Note:

All refrigerated cases are designed to operate in an environment of 75 degrees and 55% relative humidity. Product must be cooled before being displayed within the case.

**DRAIN IS REQUIRED**

## Shipping Information

| Model No.         |  | RIN2-24<br>RIN2-24-LED | RIN3-24<br>RIN3-24-LED | RIN4-24<br>RIN4-24-LED | RIN5-24<br>RIN5-24-LED |
|-------------------|--|------------------------|------------------------|------------------------|------------------------|
| Shipping Info     |  |                        |                        |                        |                        |
| Height            |  | 83"                    | 83"                    | 83"                    | 83"                    |
| Length            |  | 61"                    | 86"                    | 107"                   | 134"                   |
| Depth             |  | 43"                    | 43"                    | 43"                    | 43"                    |
| Gross weight lbs. |  | 568                    | 832                    | 1096                   | 1360                   |
| Cubic Feet        |  | 125                    | 177                    | 221                    | 276                    |

| Model No.         |  | RIN2-30<br>RIN2-30-LED | RIN3-30<br>RIN3-30-LED | RIN4-30<br>RIN4-30-LED | RIN5-30<br>RIN5-30-LED |
|-------------------|--|------------------------|------------------------|------------------------|------------------------|
| Shipping Info     |  |                        |                        |                        |                        |
| Height            |  | 83"                    | 83"                    | 83"                    | 83"                    |
| Length            |  | 74"                    | 107"                   | 134"                   | 171"                   |
| Depth             |  | 43"                    | 43"                    | 43"                    | 43"                    |
| Gross weight lbs. |  | 680                    | 1000                   | 1360                   | 1700                   |
| Cubic Feet        |  | 153                    | 221                    | 277                    | 353                    |

## RIN Endless Design - Glass Door Reach In Refrigerators - 24" and 30" Doors

### Technical Data

| Model No.<br>24" Door model                        | RIN2-24<br>RIN2-24-LED | RIN3-24<br>RIN3-24-LED | RIN4-24<br>RIN4-24-LED | RIN5-24<br>RIN5-24-LED |
|--|------------------------|------------------------|------------------------|------------------------|
| Length   | 54.88"                 | 78.88"                 | 102.38"                | 126.13"                |
| Height   | 78.5"                  | 78.5"                  | 78.5"                  | 78.5"                  |
| Depth with drain cover                             | 35.5"                  | 35.5"                  | 35.5"                  | 35.5"                  |
| (Dimensions are +/- 1/4")<br>Operating temperature | 36°F to 40°F           | 36°F to 40°F           | 36°F to 40°F           | 36°F to 40°F           |
| Refrigerant (expansion valve)                      | R407A                  | R407A                  | R407A                  | R407A                  |
| BTU's at +20°F Evap. Temp.                         | 2473                   | 3471                   | 4481                   | 5522                   |
| Voltage  | 115                    | 115                    | 115                    | 115                    |
| Amperage, lights and fans                          | 4.1                    | 5.6                    | 7.3                    | 9.0                    |
| Cord and plug                                      | NO                     | NO                     | NO                     | NO                     |
| Exterior color                                     | W, B, S                | W, B, S                | W, B, S                | W, B, S                |
| Interior color                                     | W, B, S                | W, B, S                | W, B, S                | W, B, S                |
| Inside end panels                                  | W, B, S                | W, B, S                | W, B, S                | W, B, S                |
| Floors - removeable deck pans                      | W, B, S                | W, B, S                | W, B, S                | W, B, S                |
| Drain required                                     | YES                    | YES                    | YES                    | YES                    |
| Door size  | 23.75" x 62.69"        | 23.75" x 62.69"        | 23.75" x 62.69"        | 23.75" x 62.69"        |
| Total shelves                                      | 10                     | 15                     | 20                     | 25                     |
| Shelf size   | (10) 23.12" x 23"      | (15) 23.12" x 23"      | (20) 23.12" x 23"      | (25) 23.12" x 23"      |

| Model No.<br>30" Door model                        | RIN2-30<br>RIN2-30-LED | RIN3-30<br>RIN3-30-LED | RIN4-30<br>RIN4-30-LED | RIN5-30<br>RIN5-30-LED |
|--|------------------------|------------------------|------------------------|------------------------|
| Length   | 68.0"                  | 98.5"                  | 128.5"                 | 162"                   |
| Height   | 78.5"                  | 78.5"                  | 78.5"                  | 78.5"                  |
| Depth with drain cover                             | 35.5"                  | 35.5"                  | 35.5"                  | 35.5"                  |
| (Dimensions are +/- 1/4")<br>Operating temperature | 36°F to 40°F           | 36°F to 40°F           | 36°F to 40°F           | 36°F to 40°F           |
| Refrigerant (expansion valve)                      | R407A                  | R407A                  | R407A                  | R407A                  |
| BTU's at +20°F Evap. Temp.                         | 2840                   | 4064                   | 5206                   | 6439                   |
| Voltage  | 115                    | 115                    | 115                    | 115                    |
| Amperage, lights and fans                          | 4.2                    | 5.9                    | 7.6                    | 8.7                    |
| Cord and plug                                      | NO                     | NO                     | NO                     | NO                     |
| Exterior color                                     | W, B, S                | W, B, S                | W, B, S                | W, B, S                |
| Interior color                                     | W, B, S                | W, B, S                | W, B, S                | W, B, S                |
| Inside end panels                                  | W, B, S                | W, B, S                | W, B, S                | W, B, S                |
| Floors - removeable deck pans                      | W, B, S                | W, B, S                | W, B, S                | W, B, S                |
| Drain required                                     | YES                    | YES                    | YES                    | YES                    |
| Door Size  | 29.75" x 62.69"        | 29.75" x 62.69"        | 29.75" x 62.69"        | 29.75" x 62.69"        |
| Total Shelves                                      | 10                     | 15                     | 20                     | 25                     |
| Shelf size   | (10) 29.75" x 23"      | (15) 29.75" x 23"      | (20) 29.75" x 23"      | (25) 29.75" x 23"      |

#### Prefix

SC = Self Contained  
R = Remote

#### Suffix

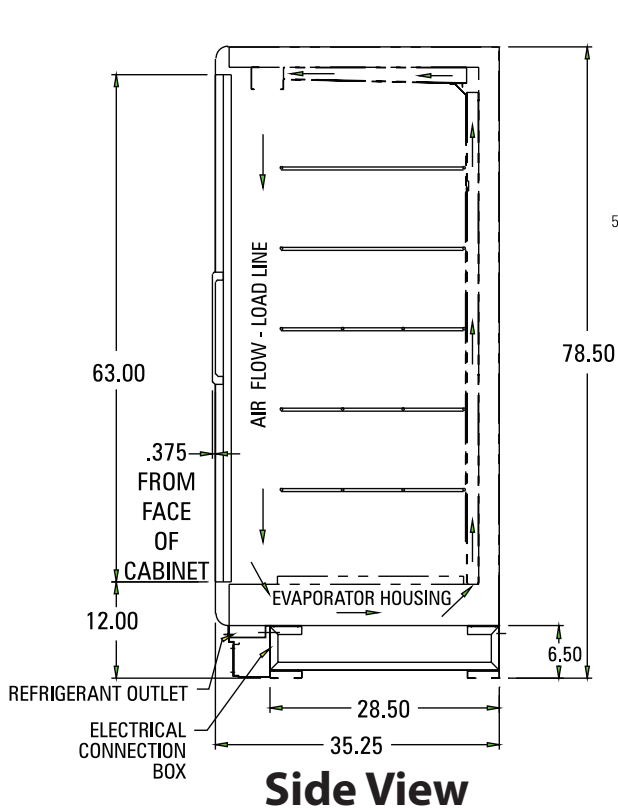
B = Black  
W = White  
S = Stainless Steel  
LS = T8 lighting  
LED = LED lighting

- Cases are designed to operate at 75 degrees Fahrenheit and 55% relative humidity
- Cases are equipped with drains; check your local building codes for connection requirements.
- Specification subject to change without notice

(ALL WHITE OR ALL BLACK, NO EXTRA CHARGE—  
IF COLORS ARE MIXED AN ADDITIONAL CHARGE WILL APPLY)

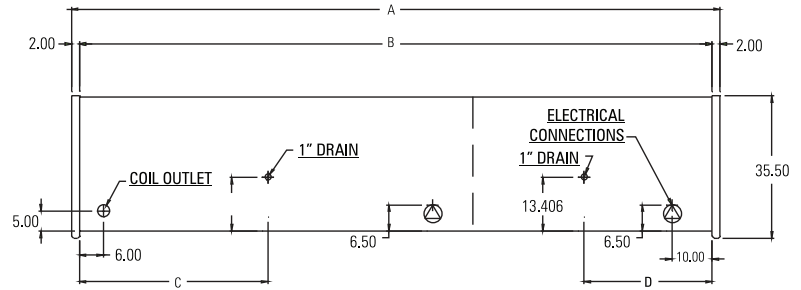
## RIN Endless Design - Glass Door Reach In Refrigerators - 24" and 30" Doors

### Technical Data • Side View • Plan View

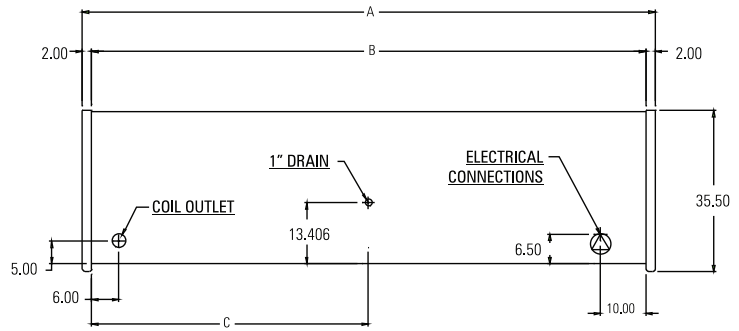


**Side View**

NOTE:  
RIF/RIN5-24 and 5-30 CABINETS ARE A COMBINATION OF  
(1) RIF/RIN3 AND (1) RIF/RIN2, MOUNTED TOGETHER  
WITH (2) COILS, (2) DRAINS, (2) ELECTRICAL CONNECTIONS

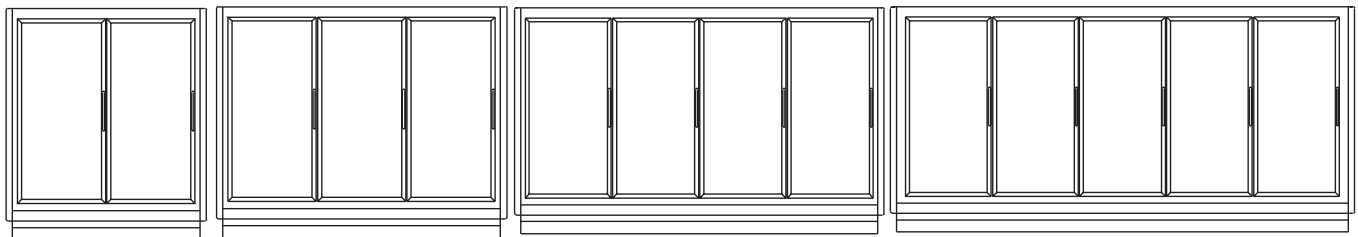
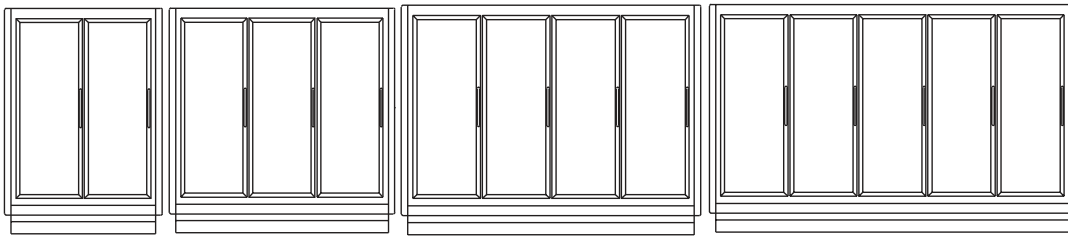


| Model       | A         | B         | C         | D         |
|-------------|-----------|-----------|-----------|-----------|
| RIF/RIN2-30 | 67-13/16" | 63-13/16" | 31-15/16" |           |
| RIF/RIN3-30 | 98-13/16" | 94-3/16"  | 47-1/6"   |           |
| RIF/RIN4-30 | 128-5/8"  | 124-5/8"  | 62-15/16" |           |
| RIF/RIN5-30 | 162"      | 158"      | 47-1/16"  | 31-15/16" |



| Model       | A        | B        | C         |
|-------------|----------|----------|-----------|
| RIF/RIN2-24 | 54-7/8"  | 50-7/8"  | 25-3/16"  |
| RIF/RIN3-24 | 78-7/8"  | 74-7/8"  | 37-1/16"  |
| RIF/RIN4-24 | 102-3/8" | 99-3/8"  | 48-15/16" |
| RIF/RIN5-24 | 126-1/8" | 122-1/8" | 37-1/6"   |

**Plan Views**



**Front Views**