

Open Merchandiser Multipurpose - Remote - Endless Design



Model No.	Description	Length	Depth	Height	Voltage	Amps	BTUs	Power Cord	Est. Ship Weight
R-ODA32E-6	Remote	72.00"	31.80"	80.875"	115	1.4	9750	NO	780
R-ODA32E-6-LS	Remote	72.00"	31.80"	80.875"	115	2.6	9750	NO	780
R-ODA32E-6-LED	Remote	72.00"	31.80"	80.875"	115	2.6	9750	NO	780

MODEL NUMBER PREFIX - SC = Self Contained R = Remote
 MODEL NUMBER SUFFIX - W = White B = Black S = Stainless Steel LED = LED lighting
 • Cases are designed to operate at 75 degrees Fahrenheit and 55% relative humidity
 • Cases are equipped with drains; check your local building codes for connection requirements.
 • Specification subject to change without notice
 IF COLORS ARE MIXED AN ADDITIONAL CHARGE WILL APPLY



Open Merchandiser Multipurpose - Remote - Endless Design

Standard Specifications and Optional Features

CONSTRUCTION

- UL Classified to ANSI/NSF 7
- Foamed in place CFC free foam
- Heavy gauge steel super structure
- Multi deck
- Endless design allows for continuous line up

INTERIOR

- White, black, or stainless steel end panels
- Removable white, black, or stainless steel floor pans
- White, black, or stainless steel perforated rear wall (for even air distribution)
- Full length lighting at top of unit
- 5 levels of product display
- Stylish tag molding on each shelf

EXTERIOR

- White, black, or stainless steel ends and front
- White, black, or stainless steel color band
- Removeable front grill allows for cleaning and servicing

FINISHES

- White, black, or stainless steel end panels
- White, black, or stainless steel front rail
- White, black, or stainless steel front color band
- White, black, or stainless steel end trim
- Laminate, and custom paints available
- Coated galvanized rear

LIGHTING

- 1 row at inside top of unit

ELECTRICAL REQUIREMENTS

- UL/CUL listed
- See Tech page for details on voltage

REFRIGERATION

- Expansion valve system
- Low velocity fans located below deck area (to insure even flow of air)
- New high efficiency air screen technology
- Remote only

OPTIONAL FEATURES

- LED lights
- Night covers
- Security cover
- Peg bars
- Insulated divider for line ups
- Plexiglas divider
- Stainless steel, laminated or paint
- Product stops on shelving
- Digital thermometer

Open Merchandiser Multipurpose - Remote - Endless Design

Technical Data

Model No.		R-ODA32E-6	R-ODA32E-6-LS	R-ODA32E-6-LED
Length with (2) ends		72"	72"	72"
Length without ends		69.75"	69.75"	69.75"
Height with ends		80.875"	80.875"	80.875"
Height without ends		79.625"	79.625"	79.625"
Depth with ends		31.875"	31.875"	31.875"
Depth without ends		31.125"	31.125"	31.125"
Endless design		YES	YES	YES
(Dimensions are +/- 1/4")				
Operating temperature		36°F to 40°F	36°F to 40°F	36°F to 40°F
Refrigerant (expansion valve)				
Defrost per day (24 hours)	Air Defrost			
BTU's at +20°F Evap. Temp.	R	9750	9750	9750
Remote Voltage	R	115	115	115
Amperage, lights only	R	1.4	2.6	2.6
Power Cord	R	NO	NO	NO
Exterior color		W, B	W, B	W, B
Interior color		W, B	W, B	W, B
# of rows / shelves		4/8	4/8	4/8
Shelf size depth		(4) 12" (4) 14"	(4) 12" (4) 14"	(4) 12" (4) 14"
Shipping Info				
Height		84"	84"	84"
Depth		44"	44"	44"
Length		87"	87"	87"
Gross weight		780	780	780
Cubic feet		184	184	184

(ALL WHITE OR ALL BLACK, NO EXTRA CHARGE—IF COLORS ARE MIXED AN ADDITIONAL CHARGE WILL APPLY)

Prefix

SC = Self Contained
R = Remote

Suffix

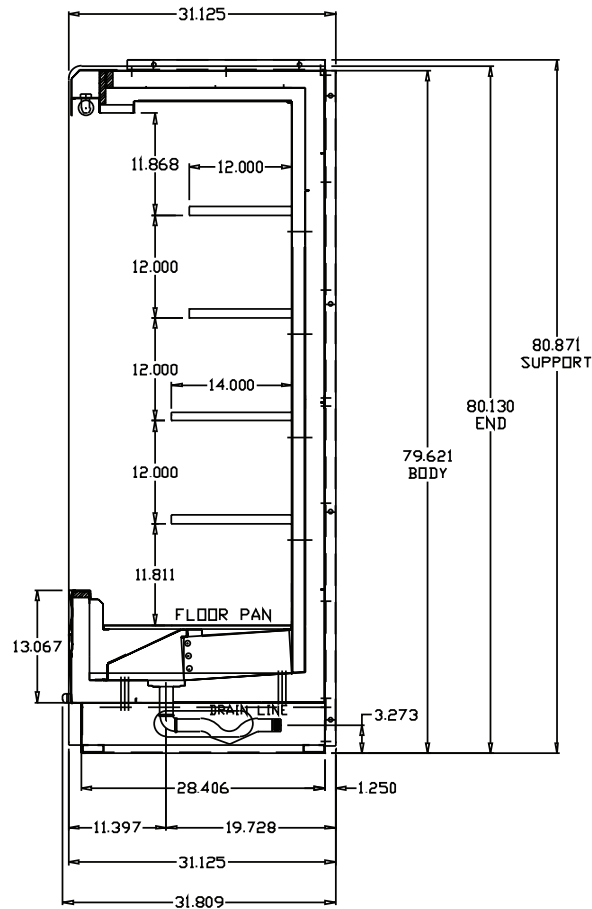
B = Black
W = White
S = Stainless Steel
LS = T8 lighting
LED = LED lighting

- Cases are designed to operate at 75 degrees Fahrenheit and 55% relative humidity
- Cases are equipped with drains; check your local building codes for connection requirements.
- Specification subject to change without notice

Open Merchandiser Multipurpose - Remote - Endless Design

Technical Data • Side View • Plan View

Side View



Plan View

