

## 32E SERIES - ENDLESS DESIGN CURVED GLASS - SINGLE DUTY - DELI



MODEL NO.	DESCRIPTION	LENGTH	DEPTH	HEIGHT	VOLTAGE	AMPS	HP/BTUS	POWER CORD	EST. SHIP WEIGHT
SC-CDS32E-4C-LED	Self Contained	50"	30.5"	50.5"	115	12.0	1/4	5-15P	500
SC-CDS32E-6C-LED	Self Contained	74"	30.5"	50.5"	115	12.0	1/3	5-15P	710
SC-CDS32E-8C-LED	Self Contained	98"	30.5"	50.5"	115	16.0	1/2	5-20P	940
R-CDS32E-4C-LED	Remote	50"	30.5"	50.5"	115	1.4	1400	NO	460
R-CDS32E-6C-LED	Remote	74"	30.5"	50.5"	115	2.2	2100	NO	660
R-CDS32E-8C-LED	Remote	98"	30.5"	50.5"	115	2.8	2800	NO	910

MODEL NUMBER PREFIX - SC = Self Contained R = Remote  
 MODEL NUMBER SUFFIX - W = White B = Black S = Stainless Steel LED = LED lighting  
 • Cases are designed to operate at 75 degrees Fahrenheit and 55% relative humidity  
 • Cases are equipped with drains; check your local building codes for connection requirements.  
 • Specification subject to change without notice  
 IF COLORS ARE MIXED AN ADDITIONAL CHARGE WILL APPLY



Howard McCray • 831 East Cayuga St • Philadelphia, PA 19124 USA • (215) 464-6800  
 1-800-344-8222 • Fax (215) 969-4890 • E-Mail: sales@howardmccray.com • www.howardmccray.com

## 32E SERIES - ENDLESS DESIGN CURVED GLASS - SINGLE DUTY - DELI

### STANDARD SPECIFICATIONS AND OPTIONAL FEATURES

#### CONSTRUCTION

- UL Classified to ANSI/NSF 7
- Foamed in place CFC free foam
- Thermal insulated curved glass
- Heavy gauge steel super structure
- Single duty display
- Endless design allows for continuous line up
- Drain is included for cleaning

#### INTERIOR

- Stainless steel mirrored upper ends
- Stainless steel heavy gauge lighted mezzanine shelf (1 row)
- White aluminum floor-main deck shelves
- Air insulated baffle (prevents moisture from dripping into display area)

#### EXTERIOR

- Double pane rear removable doors
- Newly designed rear compression door jamb
- Removable front grille allows for cleaning
- Removable rear grille for easy servicing
- 1" removeable end panels
- 1" Front bumper

#### FINISHES

- White, black, and stainless steel front and ends
- Stainless steel mirror trim
- Stainless steel heavy gauge top - 16" W
- Rear of unit is stainless steel brush finish at top
- Bottom rear is designer white or glossy black

#### LIGHTING

- 1 row of lighting at top of unit

#### ELECTRICAL REQUIREMENTS

- 115V with powercord
- UL/CUL listed
- 115V-5AMP general purpose receptacle

#### REFRIGERATION

- Copevap system (eliminates need for condensate pan)
- Gravity coil located at inside top of unit
- Self contained unit
- Automatic defrost electronically controlled (self contained units only)
- Electronically maintains constant temperatures
- Remotes available

#### OPTIONS

- Stainless steel, laminate, or paint
- Mirrored doors
- Extra stainless steel mezzanine shelf
- 1" Special color front bumper
- Door locks
- Pass thru front doors
- Salad pan settings

#### IMPORTANT NOTE:

**ALL REFRIGERATED CASES ARE DESIGNED TO OPERATE IN AN ENVIRONMENT OF 75 DEGREES AND 55% RELATIVE HUMIDITY.**

**PRODUCT MUST BE COOLED BEFORE BEING DISPLAYED WITHIN THE CASE.**

**DRAIN IS REQUIRED**

## 32E SERIES - ENDLESS DESIGN CURVED GLASS - SINGLE DUTY - DELI

### TECHNICAL DATA

MODEL NO.	SC R	SC-CDS32E-4C-LED R-CDS32E-4C-LED	SC-CDS32E-6C-LED R-CDS32E-6C-LED	SC-CDS32E-8C-LED R-CDS32E-8C-LED
Length with (2) ends		50"	74"	98"
Length without ends		48"	72"	96"
Height with ends		50.5"	50.5"	50.5"
Height without ends		50"	50"	50"
Depth with ends		30.5"	30.5"	30.5"
Depth without ends		30"	30"	30"
Endless design (Dimensions are +/- 1/4")		YES	YES	YES
Operating temperature		36°F to 40°F	36°F to 40°F	36°F to 40°F
Compressor size HP	SC	1/4	1/3	1/2
Defrost per day (24 hours)	Air Defrost	1 per day	1 per day	1 per day
BTU's at +20°F Evap. Temp.	R	1400	2100	2800
Voltage	SC	115	115	115
Amperage	SC	12.0	12.0	16.0
Remote Voltage	R	115	115	115
Amperage, lights only	R	1.4	2.2	2.8
Cord and plug	SC R	5-15P NO	5-15P NO	5-20P NO
Exterior color		W, B, S	W, B, S	W, B, S
Interior color		W, B, S	W, B, S	W, B, S
Floors		W, B, S	W, B, S	W, B, S
# of top doors		2	2	4
Door size		20.8" x 23.5"	31.3" x 23.5"	20.8" x 23.5"
# of coils		1	1	1
Bottom storage		NO	NO	NO
Front glass		Curved	Curved	Curved
# of main deck shelves		2	3	4
Main deck size		23.625" x 25"	23.625" x 25"	23.625" x 25"
Cubic capacity		23	34.5	46
Mezzanine shelf (1)		47.00" x 12.00"	69.25" x 12.00"	(2) 47.00" x 12.00"
Shipping Info				
Height		55"	55"	55"
Depth		44"	44"	44"
Length		61"	87"	115"
Gross weight SC/R		500/460	710/660	940/910
Cubic feet		85	122	161

#### Prefix Suffix

SC = Self Contained  
R = Remote

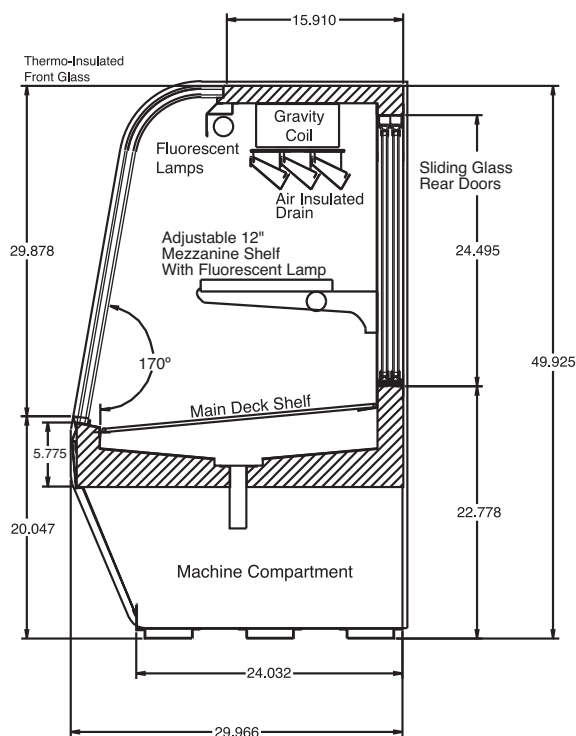
B = Black  
W = White  
S = Stainless Steel  
LED = LED lighting

- Cases are designed to operate at 75 degrees Fahrenheit and 55% relative humidity
- Cases are equipped with drains; check your local building codes for connection requirements.
- Specification subject to change without notice

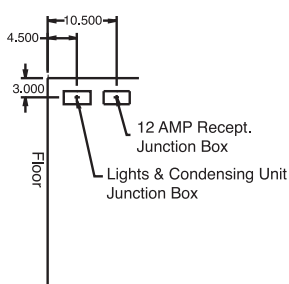
**(ALL WHITE OR ALL BLACK, NO EXTRA CHARGE—IF COLORS ARE MIXED AN ADDITIONAL CHARGE WILL APPLY)**

## 32E SERIES - ENDLESS DESIGN CURVED GLASS - SINGLE DUTY - DELI

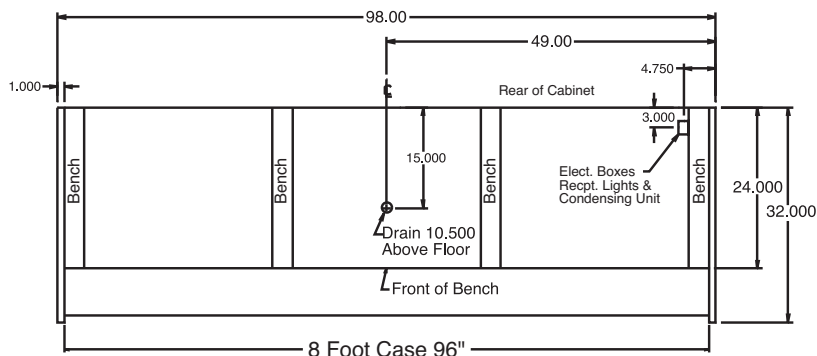
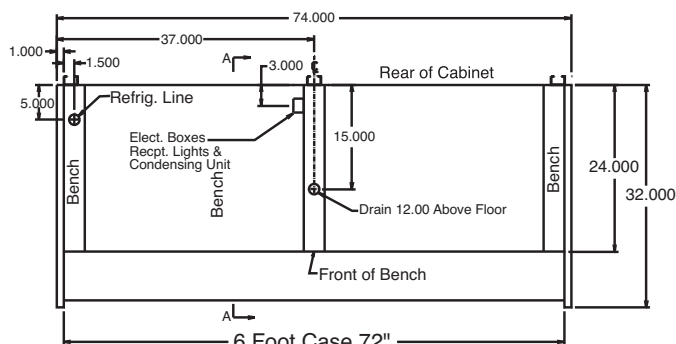
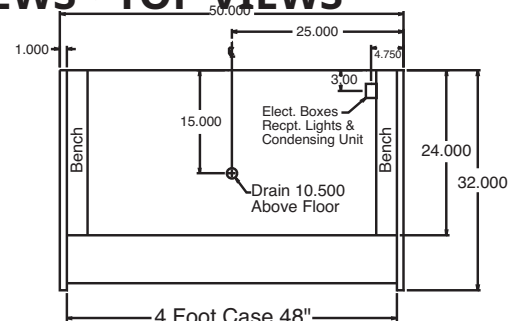
### DRAWINGS • SIDE VIEW • PLAN VIEW DRAWINGS • SIDE VIEW • FRONT VIEWS • TOP VIEWS



CROSS SECTION



JUNCTION BOX



PLAN VIEWS

#### IMPORTANT NOTE:

ALL REFRIGERATED CASES ARE DESIGNED TO OPERATE IN AN ENVIRONMENT OF 75 DEGREES AND 55% RELATIVE HUMIDITY.  
PRODUCT MUST BE COOLED BEFORE BEING DISPLAYED WITHIN THE CASE.

DRAIN IS REQUIRED